



CONNECTICUT ASSOCIATION FOR  
**Infant Mental Health**

Promoting, supporting and strengthening children's earliest relationships,  
prenatal to age six

[www.ct-aimh.org](http://www.ct-aimh.org)

**2022-2023**  
**CT-AIMH**  
**Biannual Report**

CT-AIMH  
c/o Yale Child Study Center  
230 S. Frontage Road,  
New Haven, CT 06520





CONNECTICUT ASSOCIATION FOR  
**Infant Mental Health**

Promoting, supporting and strengthening children's earliest relationships,  
prenatal to age six

[www.ct-aimh.org](http://www.ct-aimh.org)

- Message from the Executive Director - **Slide 3**
- Mission, Vision, and Goals - **Slide 4**
- Audience Specific Trainings- **Slides 5-7**
- Conferences- **Slides 8- 10**
- Committees- **Slides 11- 15**
- Spotlight- **Slides 16- 19**
- Endorsement- **Slide 20**
- Membership- **Slides 21-22**
- Reflective Supervision- **Slides 23-24**
- Alliance for the Advancement for IMH- **Slide 25**
- World Association for Infant Mental Health - **Slide 26**
- Financial Health- **Slide 27-28**
- Next Steps- **Slides 29**
- Board of Directors- **Slides 30**
- CT-AIMH Staff- **Slides 31-32**
- Partners/Sponsors- **Slides 33-34**



## Table of Contents

# 2022-2023 CT-AIMH Biannual Report

The IECMH workforce,  
deserves *GRACE*.  
Grace is goodwill that is not  
earned, but freely given.

# A Message from the Executive Director

**Grace.**, by Sarah Gambito

You will transcend your ancestor's suffering  
You will pick a blue ball. You will throw it to yourself.

You will be on the other side to receive.

Green leaves grow around your face.

Hair stands on your body.

You look at old photographs that say:  
The bread is warm! A child is a blessing!

That's what I said! I meant it!

You could say this is a poem.

Like the great halves of the roof  
that caved and carved together.

Found us before words  
and tender-footing.

Before wrongdoing  
and the octaves of blue  
above us all.

## Executive Director Profile

Heidi Maderia, MS, IMH-E® has spent her career serving children 0-6 years old who are experiencing a myriad of social, emotional, and behavioral issues, and has been privileged to partner with their families/caregivers to discover, enhance, and integrate the best supports for them, while promoting the importance of positive first relationships. At CT-AIMH, her focus is now on creating a competent, diversity-informed, IECMH workforce.





# CONNECTICUT ASSOCIATION FOR Infant Mental Health

Promoting, supporting and strengthening children's earliest relationships,  
prenatal to age six

[www.ct-aimh.org](http://www.ct-aimh.org)



## CT AIMH Mission & Hope

The Connecticut Association for Infant Mental Health (CT-AIMH) works to promote, support and strengthen nurturing, quality relationships for infants, young children and their caregivers, within the context of family, community and culture, through education, advocacy, and professional development.

It is CT-AIMH's hope that all infants and young children in Connecticut will experience nurturing, responsive care through strong relationships that ensure optimal social and emotional growth and development.



## CT-AIMH Goals

- Share Expertise and Promote Awareness of Issues Relating to Infant/ Early Childhood Mental Health
- Increase the Infant and Early Childhood Workforce Capacity and Competency
- Engage Visibly and Effectively in Public Policy Advocacy Issues
- Build Organizational and Operational Priorities



CONNECTICUT ASSOCIATION FOR  
**Infant Mental Health**

Promoting, supporting and strengthening children's earliest relationships,  
prenatal to age six  
[www.ct-aimh.org](http://www.ct-aimh.org)

## Audience-Specific IMH Trainings

Trainings, seminars, and workshops are designed on a variety of infant and early childhood mental health topics that are audience-specific. All trainings offered through the CT-AIMH are related to the competency requirements, that when met, lead to an Endorsement in Culturally Competent, Relationship-Focused Practice Promoting Infant Mental Health®. The parallel process is taken into consideration when designing all trainings and whenever possible, food is served and attention to participant needs is a high priority in order to create an environment that is centered around relationship-building. To promote access, IECMH-Endorsement®, Reflective Supervision/Consultation Groups and Membership Fees have been included in training series contracts to cover those costs.





# CONNECTICUT ASSOCIATION FOR Infant Mental Health

Promoting, supporting and strengthening children's earliest relationships,  
prenatal to age six

[www.ct-aimh.org](http://www.ct-aimh.org)

## Audience-Specific IMH Trainings

### Home Visitors Training Series

6-day series focused on the unique aspects of home visiting and promoting the attachment relationship between a caregiver and their infant or young child.

- 0 Trained in 2022, 29 Trained in 2023
- 158 Trained YTD



### DCF, OEC, and Community Partner Training Series

8 topics of training focused on unresolved trauma, loss and grief.

- 99 Trained in 2022, 99 Trained in 2023
- 1,144 trained YTD

### Pediatrician Series

45-minute presentation during lunch hour (lunch provided) focused on Infant Mental Health developed in partnership with Child Health Development Institute (CHDI), and now can be accessed through CT Children's Medical Center (CCMC).

- 0 trained in 2022-2023
- 14 offices trained YTD



### Childcare Provider Training Series

4-6 sessions focused on working with groups of infants and toddlers. Sessions are tailored to each community and often include additional evening sessions for family home childcare providers. Series was offered in Spanish. Offered virtually.

- English series: 23 Trained in 2022, 0 in 2023
- Spanish series: 25 Trained in 2022, 38 in 2023
- 416 trained YTD



# CONNECTICUT ASSOCIATION FOR Infant Mental Health

Promoting, supporting and strengthening children's earliest relationships,  
prenatal to age six

[www.ct-aimh.org](http://www.ct-aimh.org)

## Audience-Specific IMH Trainings

### Reflective Supervision/Consultation (RS/C) Training Series for Supervisors

Began as a 5-day training series, with both in-state and out-of-state presenters. It also had a 2-day follow-up and ½ day follow-up. There was a focus on embedding the newly developed RIOS. The series was then trimmed to five(5) 3-hour modules.

- 23 Trained in 2022, 21 Trained in 2023
- 70 trained YTD

### Higher Education Faculty

2-day symposium titled: The Faculty Symposium on Embedding Infant and Early Childhood Mental Health Principles into Curricula created in Minn. 3 presenters from Minn. presented 4 topics of the 10 created with 2 in-state keynote presenters that spoke to 2 of the 4 topics.

- 0 trained in 2022-2023
- 24 trained YTD



### Clinical Mental Health Practitioners

18 month training on Trauma-Informed Child Parent Psychotherapy (CPP) entailed 7 or 8 in-person full days, and 18 months of consultation calls (2 calls/1 hour each/month).

- 0 trained in 2022-2023
- 29 trained YTD

### DC:0-5, Clinical Training

CT-AIMH trained 2 DC:0-5 Train the Trainers (TOT) in 2023, will begin offering training in 2024.



# CONNECTICUT ASSOCIATION FOR Infant Mental Health

Promoting, supporting and strengthening children's earliest relationships,  
prenatal to age six

[www.ct-aimh.org](http://www.ct-aimh.org)

## CT-AIMH Conferences

Two conferences are held each year, one in the Spring and one in the Fall. Conferences are designed for professionals working with infants and young children (ages 0-6), and their families, from many disciplines. CT-AIMH has committed to highlighting one of the Diversity-Informed Tenets for Work with Infants, Child, and Families (Irving Harris Foundation), each year, at the Fall Conference.

In 2022, two conferences were held virtually and a total of 340 attended. In 2023, two conferences were held in-person and a total of 374 attended.

To date, CT-AIMH has provided training to 3,753 professionals across Connecticut. We have enjoyed the participation of professionals from nearby states and when virtual, from states as far way as Utah.






## 2022 Virtual Conferences

### Spring 2022



**Topic:** Honoring Diversity, Identity, and Race through Infant Mental Health and Reflective Supervision


Current events such as the pandemic, racial violence, and exposed systemic racism and disparities, test us personally and professionally. Examining Infant Mental Health (IMH) and Reflective Supervision (RS) through a lens that honors diversity, identity, and race is crucial to best practice.



**Presenters:** Karol Wilson, LMSW, IMH-E® and Deborah J. Weatherston, PhD, IMH-E®

**Date:** May 12, 2022, 9am-3pm

### Fall 2022



**Topic:** Bridging to Belonging: Understanding Power and Creating Connections, with a special focus on Diversity-Informed Tenets for Work with Infants, Children, and Families (tenet #3)

**Keynote Speaker:** John A. Powell, Director of the Othering and Belonging Institute  
Moderator: Carlita Elias, PsyD, IMH-E®

**Panel Presenters:** Rebecca Cuevas, MSW, LMSW, Ava M. Hart, LCSW, IMH-E®, Julie Hall, BSc, PT, & Tanika Eaves, PhD, LCSW, IMH-E®

**Date:** November 16, 2022, 9am – 4pm

## 2023 In-Person Conferences

### Spring 2023



**Topic:** SURVIVAL TO SECURITY:  
Addressing the Stressors of the  
COVID-19 Pandemic: Keeping the  
Baby in Mind during the prenatal  
and early parenting stages

**Keynote Presenters:**

Massiel Abramson, LMFT, MS  
Jennifer Vendetti, LMSW, CEIM, PMH-  
C

**Date:** May 12, 2023, 8:30am-12:30pm



### Fall 2023



**Topic:** Diversity Informed Tenet #4-  
Recognize and Respect Non-  
Dominant Bodies of Knowledge

**Keynote Speaker:** Dr. Barbara Stroud

**Panelists:**

Anamaria Orozco, LCSW  
Hector Chaidez Ruacho, LCSW  
Susan Smith, ANFT  
Becca Atkins, LPC

**Date:** Nov. 16, 2023, 8:30am-3:30pm



# CONNECTICUT ASSOCIATION FOR Infant Mental Health

Promoting, supporting and strengthening children's earliest relationships,  
prenatal to age six

[www.ct-aimh.org](http://www.ct-aimh.org)

## Advisory Committees

### Diversity, Equity and Inclusion Advisory Committee

This committee started in 2020 and works to bring about a culture within CT-AIMH which supports and practices cultural humility. We also support and advise the Association in its work to promote a diverse, equitable, inclusive, and culturally responsive environment for the infant and early childhood mental health (IECMH) workforce as it meets the needs of young children and their families across Connecticut.



### 2022–2023 Developments



- Created a committee charter in June 2022. This Charter served as a model for the development of other advisory committee charters
- Engaged in educational exercises to support member engagement and belonging, self reflection, and deepening understanding of issues related to anti-racism, diversity, equity, justice, and inclusive excellence
- Engaged in a multidimensional, self-identity, reflection and developed a summer reading resource list
- Began the task of understanding the diversity within the Association membership, endorsed professionals, and training participants
- Identified and prioritized the collection and reporting of DEI information in order to address the need to identify disparities and help the association achieve the goal of building a more diverse workforce



# CONNECTICUT ASSOCIATION FOR Infant Mental Health

Promoting, supporting and strengthening children's earliest relationships,  
prenatal to age six

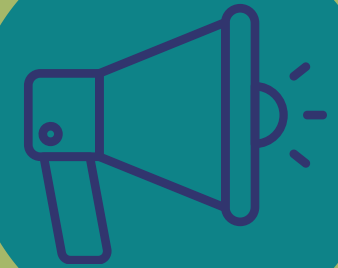
[www.ct-aimh.org](http://www.ct-aimh.org)

## Advisory Committees

IECMH-E®  
IMH-E®

### Endorsement Advisory Committee

This Committee is composed of the initial people to become endorsed in Culturally Sensitive, Relationship-Focused Practice Promoting Infant Mental Health®. The Endorsement Team plans for the advising and reviewing of portfolios and exams that may lead to Endorsement. Supported pathway for Emeritus status for Endorsees.



### 2022-2023 Developments

- This is an ad hoc committee that meets as needed
- Discussed the development of Emeritus Status for those no longer working in the IECMH field. They would not need to renew Endorsement, only need to maintain CT-AIMH membership



# CONNECTICUT ASSOCIATION FOR Infant Mental Health

Promoting, supporting and strengthening children's earliest relationships,  
prenatal to age six

[www.ct-aimh.org](http://www.ct-aimh.org)

## Advisory Committees

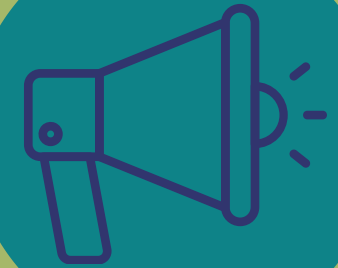
### Policy and Advocacy Advisory Committee

This Committee works to identify, monitor and respond to policy and health issues related to the mental health needs of, young children and their families. Establishes relationships with community partners, which may include the Connecticut Chapter of the American Academy of Pediatrics, State Legislators, Child Advocate, and other State Leaders. Monitors and advocates for ongoing funding for services for infants, young children and their families, and promote strong policies for infants, children and their families.



### 2022-2023 Developments

- Integrated Care Pilot contract signed and started
- Participation in the Zero To Three Infant and Early Childhood Mental Health Financing Policy Project
- CT-AIMH has joined with the CT AAP in providing testimony to the Connecticut State Legislature in opposition to a proposal to alter standards of childcare
- Support for the Sparkler app, a novel method of providing universal developmental and social-emotional screening in infancy and early childhood
- Developed Committee Charter





# CONNECTICUT ASSOCIATION FOR Infant Mental Health

Promoting, supporting and strengthening children's earliest relationships,  
prenatal to age six

[www.ct-aimh.org](http://www.ct-aimh.org)

## Advisory Committees

### Professional Development Advisory Committee

This Committee actively co-creates, supports, and promotes professional development and education opportunities that align with current best practices in Infant and Early Childhood Mental Health.



### 2022-2023 Developments



- Developed the committee charter
- Reviewed the Alliance's Publication: Preparing Competency-Based Learning for Infant and Early Childhood Mental Health Endorsement®: Training Guide and Self-Assessment
- Created a subcommittee that revised CT-AIMH's RS/C training series
- Explored collaborative efforts to support the workforce (i.e. partnered with United Way in Danbury to support IMH training and Endorsement for 20 Spanish speaking childcare providers)
- Supported CT-AIMH's continued efforts to offer training and RS/C, in Spanish
- Planned 4 CT-AIMH conferences with 2 focused on the Diversity Informed Tenets



# CONNECTICUT ASSOCIATION FOR Infant Mental Health

Promoting, supporting and strengthening children's earliest relationships,  
prenatal to age six

[www.ct-aimh.org](http://www.ct-aimh.org)

## Advisory Committees



### Promotion and Education Advisory Committee

This Committee promotes and educates the greater community on the importance of infant mental health and the work of CT-AIMH. Develop educational and promotional materials that will reach members and the greater community. Develop membership communication strategies to support engagement. Respond to opportunities to represent and promote CT-AIMH.



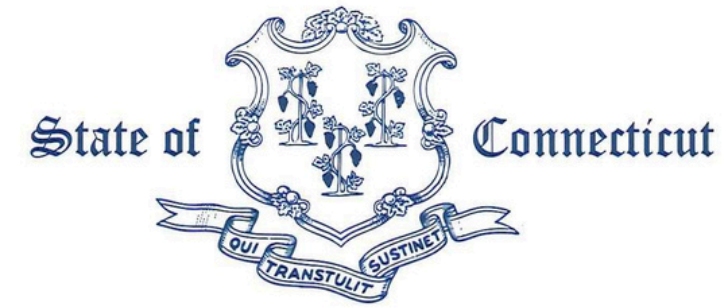
### 2022-2023 Developments

- Completed Committee Charter
- Created and Reviewed Celebrate Babies survey
- Planned and Created Celebrate Babies Week Campaign events (each October)
- Received the Governor's Proclamation for Celebrate Babies Week
- Produced Celebrate Babies Video
- Volunteered at Spring and Fall Conferences



# SPOTLIGHT: CT-AIMH Received Official Proclamations for Celebrate Babies Week in Connecticut

In 2022 and in 2023 an official statement was signed by Governor Lamont proclaiming that one week each year during the month of October is dedicated to celebrate infants, toddlers, young children, their families and early childhood professionals.



By His Excellency Ned Lamont, Governor: an  
**Official Statement**

*WHEREAS*, approximately 35,000 babies are born every year in Connecticut; and

*WHEREAS*, early relationships are the foundation for a young child's psychological, emotional, developmental, and physical wellbeing; infants, toddlers, and young children require nurturing and protection from one or more consistent caregivers; and

*WHEREAS*, Connecticut is dedicated to collaboratively increase public awareness understanding of the importance of healthy relationships and social and emotional development in the early years; and

*WHEREAS*, data shows the need to address disparities and ensure equitable access to services and programs that support infants, toddlers, young children, and their families; and

*WHEREAS*, the state is committed to improving opportunities and outcomes for infants, toddlers, young children, and their families through collaboration and partnerships; and

*WHEREAS*, one week each year is dedicated to officially celebrate infants, toddlers, young children, their families, and early childhood professionals; and

*WHEREAS*, through public awareness campaigns, intentional community outreach, networking, and social action, babies, their families, and those that support them are celebrated; now

*THEREFORE*, I, Ned Lamont, Governor of the State of Connecticut, do hereby officially proclaim the week of October 17<sup>th</sup> – 21<sup>st</sup>, 2022, to be

**CELEBRATE BABIES WEEK**

in the State of Connecticut.



*Ned Lamont*

GOVERNOR





## **SPOTLIGHT: 2023–2025 Integrated Care Pilot**

The Connecticut Association for Infant Mental Health was awarded a \$1.8 million dollar contract from the Department of Social Services for an Integrated Care Pilot Project, spanning 2023 through 2025. The pilot will ensure that children 0–3 served by the pilot project will be monitored, screened, and assessed for developmental and social emotional health needs. If indicated, they will be referred for services in their community by an integrated team of professionals including the child's Pediatrician, a Family Resource Center Family Educator, and a Mid-Level Developmental Assessment (MLDA) Practitioner.

The project will focus upon three Pediatric sites, where their community's Family Resource Center's Family Educator will be co-located, and perform appropriate screenings, refer for further assessment or services if needed, follow-up to ensure continuity of care, and monitor the child and family's progress through December 2025. The project will provide pilot families access to MLDAs in a timely manner, by contracting directly with IMH-Endorsed practitioners.

The pilot's additional goal is to increase the number of IECMH-Endorsed<sup>®</sup> professionals to provide services for children from birth to 5 years old and their caregivers. The pilot offers 80 clinical professionals a free pathway to Endorsement<sup>®</sup>, in 2024 and 2025, including participation in an Infant Mental Health Training Series, participation in a Reflective Supervision/Consultation group, CT-AIMH membership, and application for IECMH-Endorsement<sup>®</sup>.



FAMILY COMPLETES  
SPARKLER APP SCREENINGS

## SCREENING

DEVELOPMENTAL &  
SOCIAL/EMOTIONAL SCREENINGS,  
SOCIAL DETERMINANTS OF HEALTH,  
MCHAT, MAT. DEPRESSION

## CONSULTATION

FRC FAMILY EDUCATOR  
DISCUSSES SCREENING RESULTS  
WITH PEDIATRICIAN AND FAMILY

## PEDIATRICIAN

## REFERRAL

PROMOTION  
PREVENTION  
INTERVENTION  
(DIAGNOSIS /TREATMENT)

## ASSESSMENT

MID-LEVEL DEVELOPMENTAL  
ASSESSMENT (MLDA) ,  
BIRTH TO THREE

## CONSULTATION

ASSESSMENT PROVIDER  
DISCUSSES ASSESSMENT  
RESULTS WITH PEDIATRICIAN  
AND FAMILY



CONNECTICUT ASSOCIATION FOR  
**Infant Mental Health**

Promoting, supporting and strengthening children's  
earliest relationships, prenatal to age six

[www.ct-aimh.org](http://www.ct-aimh.org)

# INTEGRATED CARE PILOT 2023-2025

THE PURPOSE OF THE PILOT IS TO  
ENSURE CHILDREN AGES 0-5 ARE  
MONITORED, SCREENED, ASSESSED,  
AND REFERRED FOR APPROPRIATE  
DEVELOPMENTAL AND MENTAL HEALTH  
SERVICES IN THEIR COMMUNITIES BY  
AN INTEGRATED TEAM OF OF INFANT  
MENTAL HEALTH-TRAINED  
PROFESSIONALS BEGINNING IN YEAR  
ONE WITH CHILDREN 0-3 YEARS OLD.

# SPOTLIGHT: Celebrating Spanish Speaking ECE Professionals



Delivered 10-Topic IMH Childcare series in Spanish  
Trained 3 bilingual presenters  
Trained 4 Spanish speaking facilitators  
Purchased the Spanish version of Endorsement  
Hired a bilingual Endorsement Assistant  
Held office hours about the Endorsement, in Spanish  
Reflective Supervision offered to ECE professionals, in Spanish  
27 ECE providers became Endorsed using the Spanish Version of EASy  
Partnered with United Way of Western CT and the OEC

## Presenters:

Karen Martinez

Jolie A. Garfinkel, BA, MA, IMH-E®

Virgen Marina Rodriguez, IMH-E®



GRACIAS

## Facilitators:

Maria Amado

Gleny Adames, IMH-E®

Rosa Bodden, ECMH-E®

Ruth Rubledo, IMH-E®



# CONNECTICUT ASSOCIATION FOR Infant Mental Health

Promoting, supporting and strengthening children's earliest relationships,  
prenatal to age six

[www.ct-aimh.org](http://www.ct-aimh.org)

## Infant and Early Childhood Mental Health Endorsement® (IECMH-E®)



Endorsement for Culturally Sensitive, Relationship-Focused Practice Promoting Infant and Early Childhood Mental Health® is an internationally recognized credential used to demonstrate specialization in the infant-early childhood mental health (IECMH) field. The Endorsement credential is intended for everyone who applies IECMH principles in their work across the full continuum of promotion, prevention/early intervention, clinical intervention/treatment, and macro scopes of practice. Those who earn Endorsement® have demonstrated completion of specialized education, work, in-service training, and reflective supervision/consultation (RS/C) experiences that lead to competency in the promotion and/or practice of infant and early childhood mental health (IECMH).

### **2022-2023 Endorsement® News:**

- As of December 2023 there were over 150 endorsees
- 138 IMH endorsees and 18 ECMH endorsees!
- 27 Endorsees used the Spanish version of EASy
- New Reflective Supervision Category added to Endorsement.



# CONNECTICUT ASSOCIATION FOR Infant Mental Health

Promoting, supporting and strengthening children's earliest relationships,  
prenatal to age six  
[www.ct-aimh.org](http://www.ct-aimh.org)

## Membership Benefits

Infants and young children and their caregivers deserve support and services that encourage nurturing relationships. By joining CT-AIMH- together we can move forward in creating an infant/early childhood mental health system in Connecticut.

**Reduced conference fees and early registration opportunities**



**Current updates and news from CT AIMH, the Alliance for the Advancement of Infant Mental Health, and the World Association for Infant Mental Health**



**Connection to an interdisciplinary network of IECMH professionals**





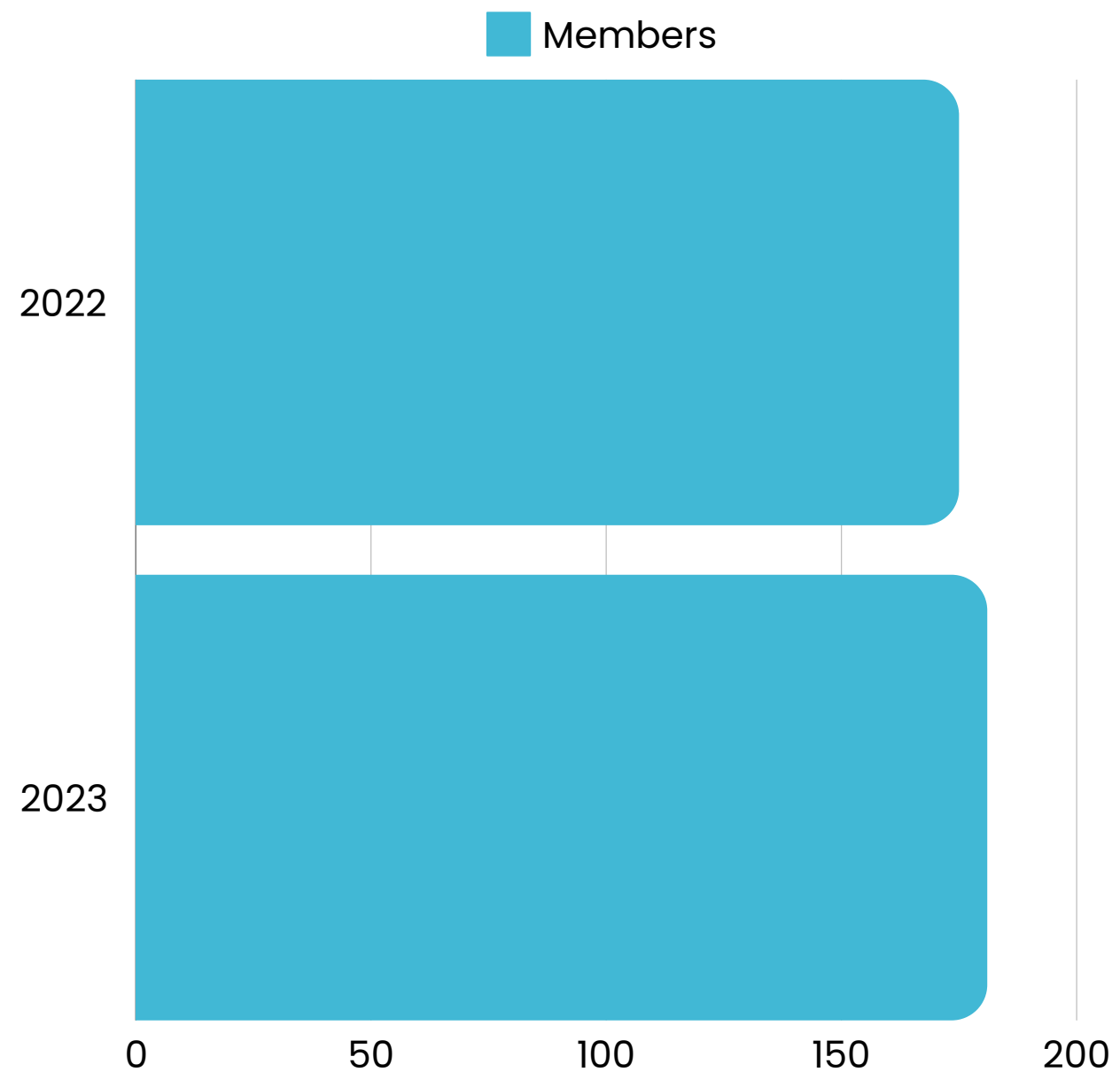
# CONNECTICUT ASSOCIATION FOR Infant Mental Health

Promoting, supporting and strengthening children's earliest relationships,  
prenatal to age six

[www.ct-aimh.org](http://www.ct-aimh.org)

## CT-AIMH Membership

**2022: 175 current members**  
**2023: 181 current members**





CONNECTICUT ASSOCIATION FOR  
**Infant Mental Health**

Promoting, supporting and strengthening children's earliest relationships,  
prenatal to age six

[www.ct-aimh.org](http://www.ct-aimh.org)

## Reflective Supervision/Consultation

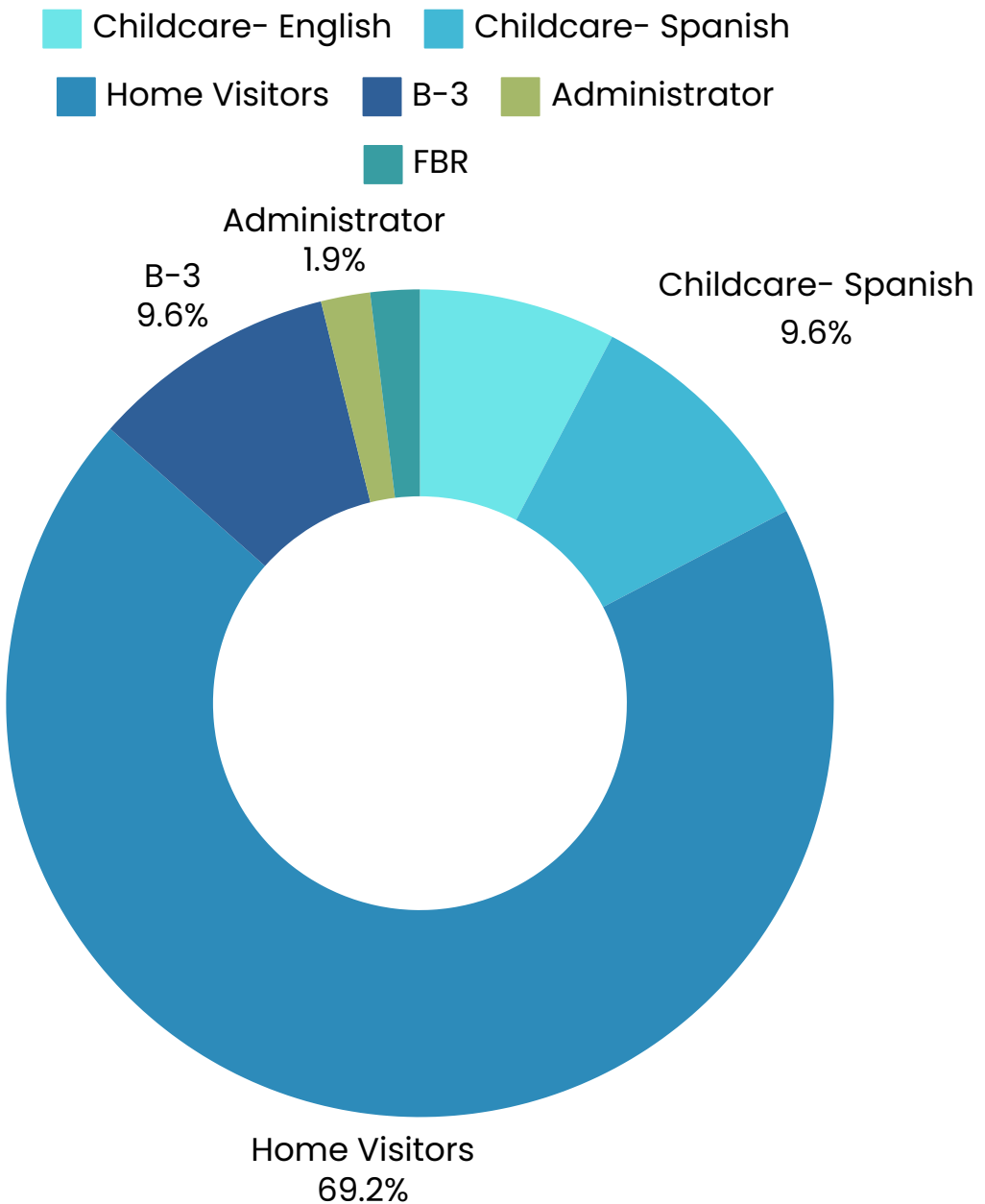
Within the RS/C process, practitioners are able to examine with a trusting supervisor/consultant the thoughts, feelings, and reactions evoked in the course of working closely with pregnant women, infants, young children, and their families. Over time and with a reliable reflective supervisor/consultant, the experience of RS/C offers practitioners the opportunity to engage in a safe, reliable, and consistent learning relationship. Through this relationship, strengths are supported, and vulnerabilities are partnered (Fenichel, 1992; Shamoon-Shanok, 2009).

A hallmark of RS/C is the shared exploration of the parallel process. In other words, in RS/C, attention is given to all relationships, including that between supervisor and practitioner, between practitioner and parent, and between parent, and infant/young child. It is critical to understand how each of these relationships affects the others.

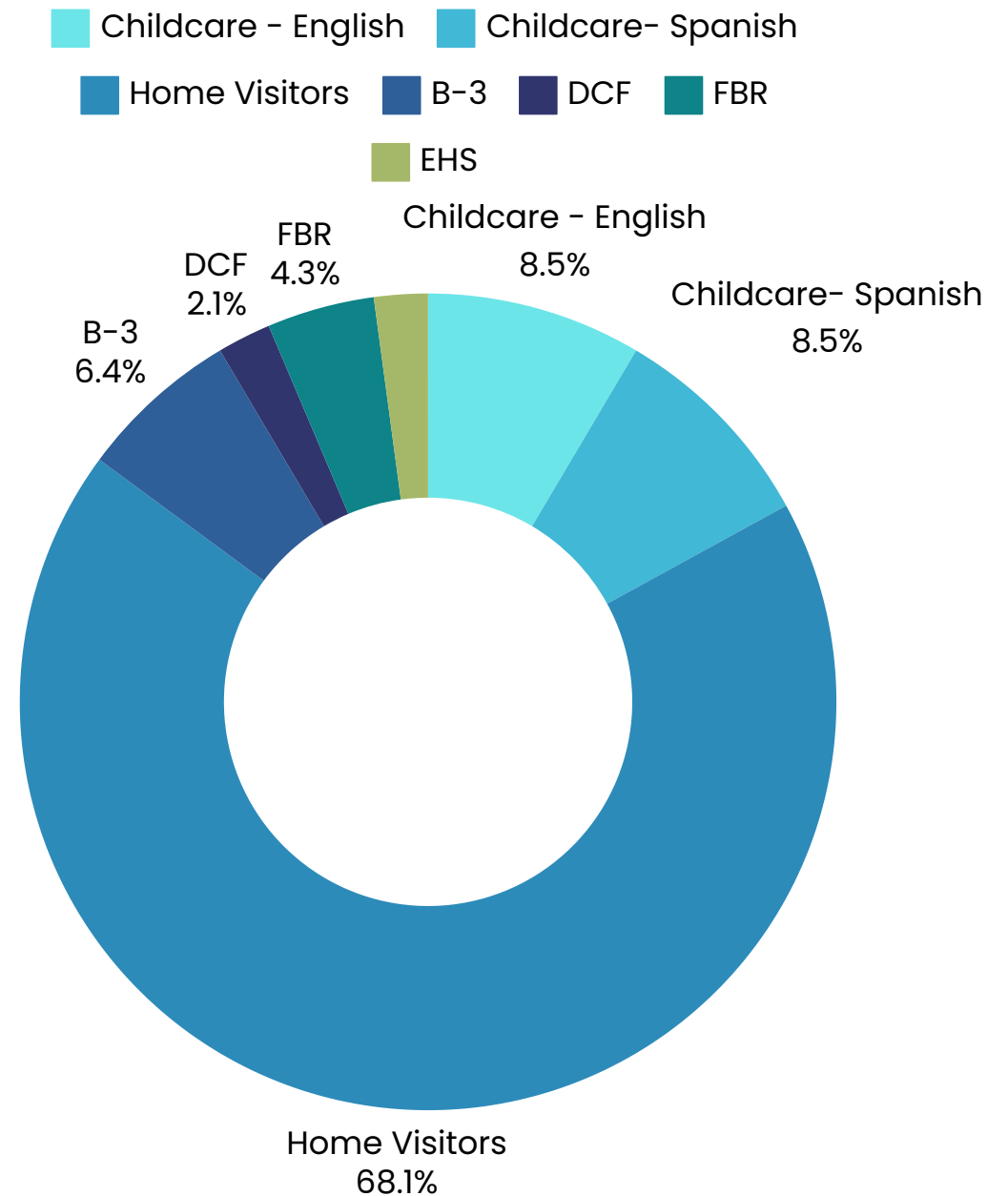
CT-AIMH values Reflective Supervision/Consultation (RS/C) and promotes inclusion of RS/C within each grant. RS/C is currently being offered to staff across many agencies & disciplines, including: Office of Early Childhood (Birth23, Home Visitors, ECE professionals) Department of Children Families, Family Based Recovery, Higher Education Faculty, and more.



# RS/C Group Composition – Total Annually



**2022– Nine groups were held with a total of 52 participants**



**2023– Nine groups were held with a total of 47 participants**



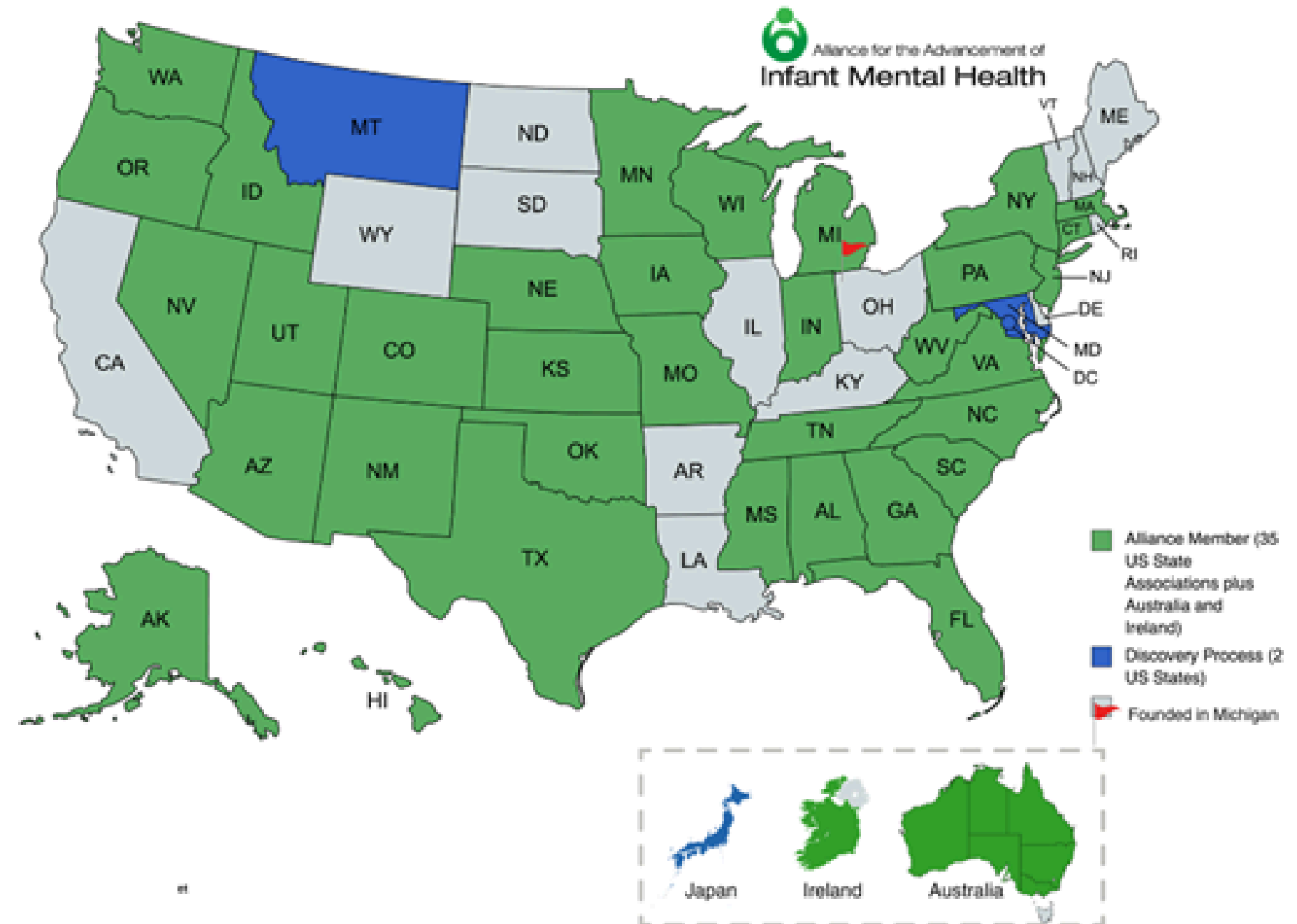


# Alliance for the Advancement of Infant Mental Health

The Alliance for the Advancement of Infant Mental Health® is the global organization that includes infant mental health associations who offer the credential: Endorsement for Culturally Sensitive, Relationship-Focused Practice Promoting Infant and Early Childhood Mental Health®.

CT-AIMH has been a member of the Alliance since its inception in 2016. CT was a part of the prior group, the “League of States,” starting in 2009.

As of April 2023, there are 35 associations for infant mental health and two international associations who have licensed the use of the Competency Guidelines (MI-AIMH Copyright © 2017) and/or the Endorsement for Culturally Sensitive, Relationship-Focused Practice Promoting Infant & Early Childhood Mental Health®. Each association is a member of the Alliance for the Advancement of Infant Mental Health.





WORLD ASSOCIATION FOR  
**INFANT MENTAL HEALTH**

The World Association for Infant Mental Health (WAIMH) is a non-profit organization that works with infants and their families to promote their mental well-being and healthy development. WAIMH's goals include:

- Considering cultural, regional, and environmental differences
- Generating and sharing scientific knowledge
- Sharing scientific knowledge about services for preventing, intervening, and caring for mental disorders in infants
- Sharing evidence-based knowledge about supporting the developmental transition to parenthood

WAIMH achieves its goals through: International and interdisciplinary cooperation, Publications, Affiliate associations, and Regional and biennial congresses.

The 18th WAIMH World Congress was held in Dublin in Ireland, July 15-19, 2023. The conference theme: Early Relationships Matter: Advancing Practice, Policy and Research in Infant Mental Health. The World Association welcomes infant mental health colleagues across the world to share the latest scientific research, clinical experiences, scientific knowledge and cultural perspectives on a global scale.

The 19th WAIMH took place in Tampere, Finland on June 5-7, 2024. The theme of the Congress, 'Looking for the Best Care for Babies, Young Children and Their Families'.



# CONNECTICUT ASSOCIATION FOR Infant Mental Health

Promoting, supporting and strengthening children's earliest relationships,  
prenatal to age six

[www.ct-aimh.org](http://www.ct-aimh.org)

## Financial Health

**2022 Revenue: \$332,856**

OEC (B-3, HV, and ECE) 70%

DCF 17%

United Way of Western CT 1%

EASTCONN .1%

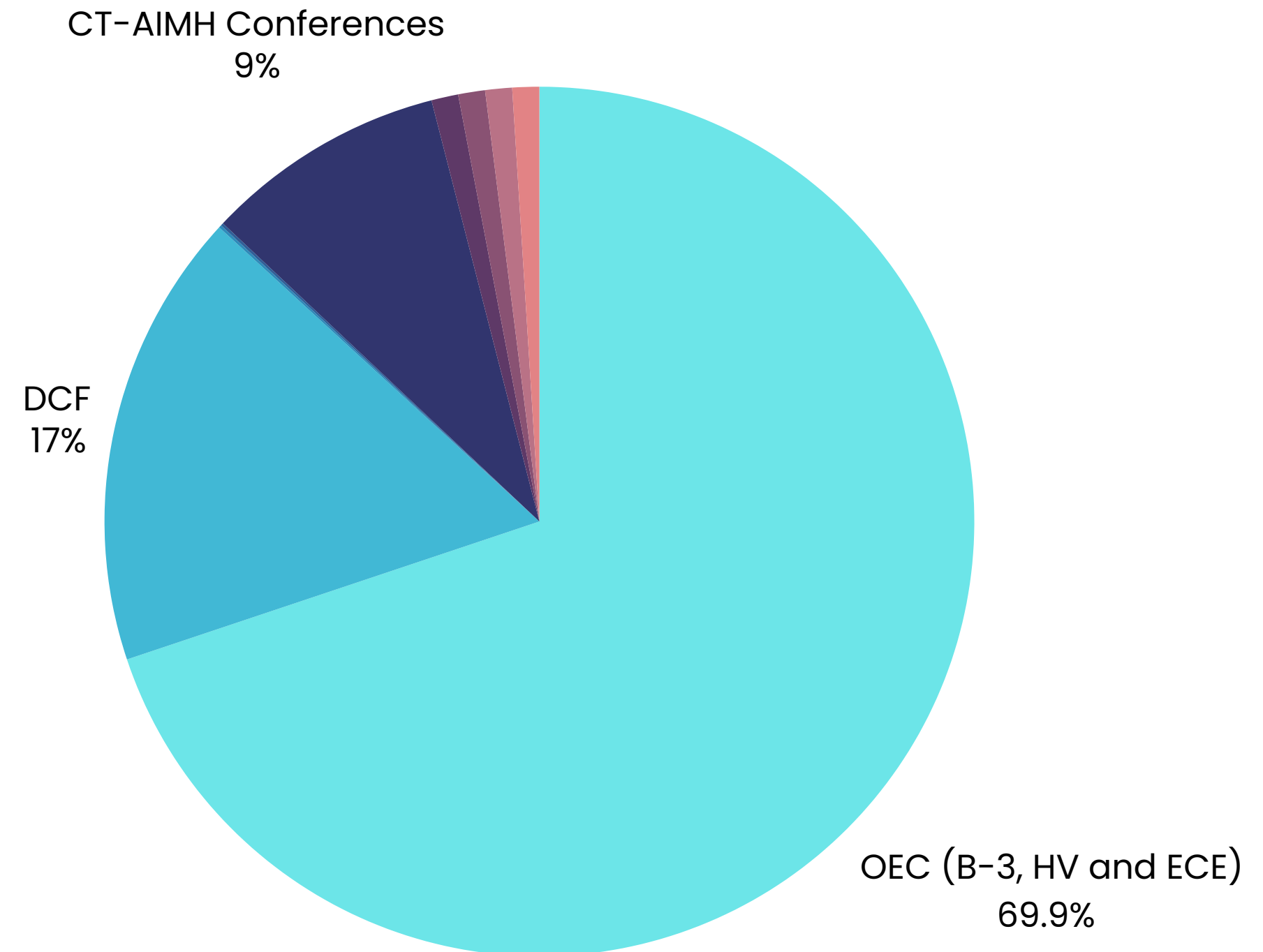
Chelsea Groton Foundation .1%

CT-AIMH Conferences 8.8%

Donations 1%

Endorsement 1%

Membership 1%

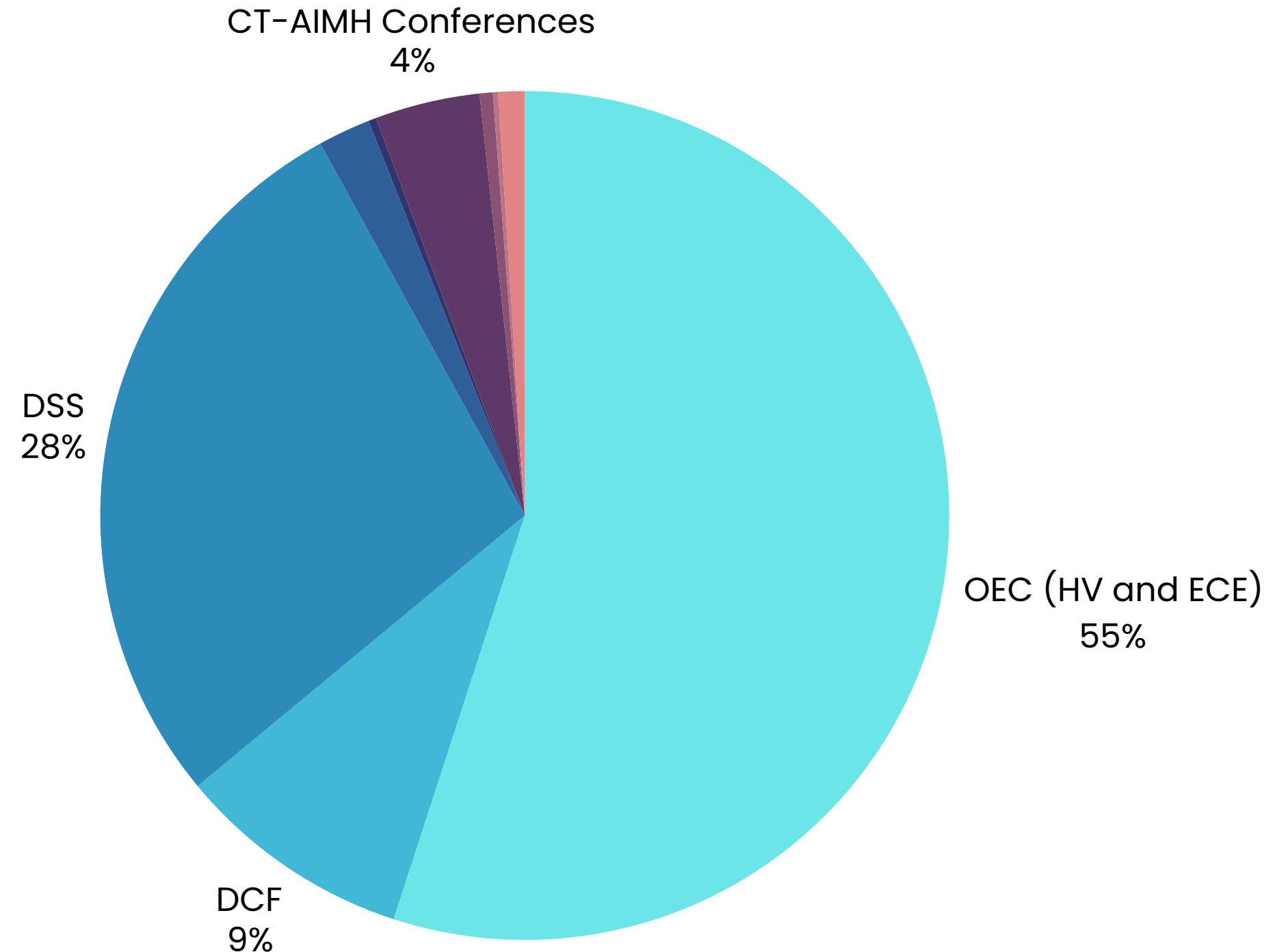


# Financial Health

**2023 Expected Revenue:**  
**\$573,015\***

- OEC (HV and ECE) 55%
- DCF 9%
- DSS 28%
- CHDI 2%
- YMCA .3%
- CT-AIMH Conferences 4%
- Donations .5%
- Endorsement .2%
- Membership 1%

\*Audit not completed at time of publication





## Next Steps:

The CT Association for Infant Mental Health has developed a strategic plan that will guide the Association in its growth, advocacy, workforce development, and promotional activities for the next few years. 2022-2023 goals:

### **Goal 1: Share Expertise and Promote Awareness of Issues Relating to Infant/Early Childhood Mental Health.**

Promotion activities will increase awareness and support for infant and early childhood mental health in Connecticut. CT-AIMH will act as the convener, to lead and guide multi-stakeholder discussions around the options for policies, practices and programs that advance infant and early childhood mental health.

### **Goal 2: Increase the Infant and Early Childhood Workforce Capacity and Competency to meet the social and emotional needs of infants, young children and their families.**

A competent workforce is critical to promoting emotional health preventing problems from emerging, and intervening with infants and young children and their families who are experiencing social emotional challenges. CT-AIMH will provide training series that include infant and early childhood mental health competencies, promote Endorsement, and promote the use of Relationship-Based Practices\* throughout the infant and early childhood communities. All children should receive periodic screening for social emotional wellness and psycho-social risk, but especially those families at greatest risk for poor developmental outcomes, including families experiencing maternal depression, substance use, domestic violence, and homelessness.

### **Goal 3: Engage Visibly and Effectively in Public Policy Advocacy Issues relating to infant mental health system of care and related funding.**

CT-AIMH is committed to sitting at every table possible and advocating for the integration of infant and early childhood mental health knowledge and the expansion of intervention and therapeutic services into all systems in CT that serve infants, young children and their families.

### **Goal 4 Build Organizational and Operational Priorities for the continued sustainability of CT-AIMH.**

Continue to build the organizational infrastructure and capacity of CT-AIMH, fortify the organization's financial foundation, and raise the organization's profile by widely sharing its mission and hope for all infants, young children and their families in CT.



## 2022–2023 Board of Directors

### **Officers:**

Susan Vater, Ed.M  
President

Carlita Elias, PsyD, IMH-E®  
Vice-President

Marianne Barton, PhD, IMH-E®  
Secretary

Robert Riley  
Treasurer

### **Directors:**

Gerald Calnen, MD, FAAP, IMH-E®  
Tanika Eaves Simpson, PhD, IMH-E®  
Doug Edwards  
M. Alex Geertsma, MD, FAAP  
Andrea Goetz, MSW  
Margaret Holmberg, PhD, IMH-E®  
Darcy Lowell, MD, IMH-E®  
Jennifer Vendetti, LMSW, CEIM

### **Non-Voting CT State Agency Representatives:**

DCF: Stephanie Bozak, PsyD  
DMHAS: Stephanie Zanker-Rivera, MS, LPC  
DPH: Ann Gionet

### **Welcomed New 2023–2024 Board of Directors Members:**

Shaniece Conyers, M.Ed.  
Claudia Liloy, LPC, IMH-E®  
Heather Black, LPCA, IMH-E®



CONNECTICUT ASSOCIATION FOR  
**Infant Mental Health**

Promoting, supporting and strengthening children's earliest relationships,  
prenatal to age six

[www.ct-aimh.org](http://www.ct-aimh.org)

## Current Staff



**Heather Black, LPCA, IMH-E®**

Program Manager



**Roxy Maderia**

Training Assistant/  
Administrative Assistant

## Contractual Staff 2022-2023



**Heather Bontiz Moore, MS,  
ATR-BC, LPC, IMH-E®**  
Endorsement Coordinator



**Anne Giordano, MA, IMH-E®**  
Training Coordinator

**Jolie A. Garfinkel, BA, MA, IMH-E®**  
Bi-lingual Endorsement Assistant

**Samantha Shaak**  
Webmaster

**Karen Martinez**  
Training Assistant

**Linda Isakson**  
Yale Support Staff

**Laura Poquette**  
Bookkeeper



# 2022-2023 Partners

The Connecticut Association for Infant Mental Health is grateful to the programs and agencies that have supported our work over the years. Our longest supporter has been the Children's Fund through the Child Health and Development Institute. We are very appreciative of the collaboration that has been forged with the Yale Child Study Center in providing us administrative space and assistance. CT-AIMH gratefully acknowledges the financial as well as consultative resources that our friends, partners, and sponsors have offered.



**United Way of Coastal  
and Western Connecticut**



# Our Sponsors

Bouvier Insurance

Building Blocks

Casey Family Programs

Chelsea Groton Foundation

Child First

Children's Fund of CT and the Child Health and Development Institute

Connecticut Birth to Three System

Connecticut Coalition for Child Development Education

Elm City Project LAUNCH, Healthy From Day One

Hartford Foundation for Public Giving, Early Childhood Investments

Infant-Toddler Developmental Assessment Institute

Peace at Home Parenting Solutions

Postpartum Support International, Connecticut Chapter

The Connecticut Early Childhood Funder Collaborative, a project of the Connecticut Council for Philanthropy

The Connecticut Head Start State Collaboration Office

The Connecticut Women's Consortium

The Connecticut Workforce Collaborative for Behavioral Health

The State of Connecticut Department of Children and Families

The State of Connecticut Office of Early Childhood

The State of Connecticut Department of Public Health

The CT Department of Social Services Infant/Toddler Quality Improvement Initiative

The Early Childhood Mental Health Consultation Partnership

The Village for Families and Children

William Casper Graustein Memorial Fund

Yale Child Study Center



CONNECTICUT ASSOCIATION FOR  
**Infant Mental Health**

Promoting, supporting and strengthening children's earliest relationships,  
prenatal to age six

[www.ct-aimh.org](http://www.ct-aimh.org)

# Thank You

CT-AIMH  
c/o Yale Child Study Center  
230 S. Frontage Road,  
New Haven, CT 06520

