



CONNECTICUT ASSOCIATION FOR
Infant Mental Health

Promoting, supporting and strengthening children's earliest relationships,
prenatal to age six

www.ct-aimh.org

2022-2023
CT-AIMH
Informe Semestral

CT-AIMH
c/o Yale Child Study Center
230 S. Frontage Road,
New Haven, CT 06520



Mensaje del Director Ejecutivo – **Slide 3**

Misión, visión y objetivos – **Slide 4**

Formación para públicos específicos – **Slides 5-7**

Conferencias – **Slides 8- 10**

Comités – **Slides 11-15**

Punto de enfoque – **Slides 16- 19**

Aval – **Slide 20**

Afiliación – **Slides 21-22**

Supervisión reflexiva – **Slides 23-24**

Alianza para el Progreso de la IMH – **Slide 25**

Asociación Mundial para la Salud Mental Infantil – **Slide 26**

Salud financiera – **Slide 27-28**

Siguientes pasos – **Slides 29**

Junta Directiva – **Slides 30**

Personal de CT-AIMH – **Slides 31-32**

Socios/patrocinadores – **Slides 33-34**



ÍNDICE

2022-2023 CT-AIMH Informe Semestral

La fuerza laboral del IECMH,
merece *GRACIA*.

La gracia es la buena voluntad
que no se gana, sino que se da
gratuitamente.

Mensaje de la Directora Ejecutiva

Gracia., de Sarah Gambito

Trascenderás el sufrimiento de tu antepasado
Recogerás una pelota azul. Te la lanzarás a ti mismo.

Estarás al otro lado para recibir.

Hojas verdes crecen alrededor de tu cara.

El vello se eriza en tu cuerpo.

Miras viejas fotografías que dicen:

¡El pan está caliente! ¡Un niño es una bendición!

¡Eso es lo que dije! ¡Lo dije en serio!

Se podría decir que esto es un poema.

Como las grandes mitades del techo que cedieron y se tallaron juntas.

Nos encontraron antes de las palabras y la ternura.

Antes de la maldad y las octavas de azul
por encima de todos nosotros.

Perfil de la Directora Ejecutiva

Heidi Maderia, MS, IMH-E® ha pasado su carrera sirviendo a niños de 0-6 años de edad que están experimentando una gran variedad de problemas sociales, emocionales y de comportamiento, y ha tenido el privilegio de asociarse con sus familias / cuidadores para descubrir, mejorar e integrar los mejores apoyos para ellos, mientras promueve la importancia de las primeras relaciones positivas. En CT-AIMH, su atención se centra ahora en crear una fuerza laboral de IECMH competente e informada sobre la diversidad.





CONNECTICUT ASSOCIATION FOR Infant Mental Health

Promoting, supporting and strengthening children's earliest relationships,
prenatal to age six

www.ct-aimh.org



Misión y esperanza de CT AIMH

La Asociación de Connecticut para la Salud Mental Infantil (CT-AIMH por sus siglas en inglés) trabaja para promover, apoyar y fortalecer relaciones enriquecedoras y de calidad para bebés, niños pequeños y sus cuidadores, dentro del contexto de la familia, la comunidad y la cultura, a través de la educación, la defensa y el desarrollo profesional.

La esperanza de CT-AIMH es que todos los bebés y niños pequeños de Connecticut reciban un cuidado afectuoso y sensible a través de relaciones sólidas que garanticen un crecimiento y un desarrollo social y emocional óptimos.



Metas de CT AIMH

- Compartir conocimientos y fomentar la concienciación sobre cuestiones relacionadas con la salud mental de bebés y niños pequeños
- Aumentar la capacidad y competencia de la fuerza laboral dedicada a la infancia y la primera infancia
- Participar de forma visible y eficaz en la defensa de políticas públicas
- Crear prioridades organizacionales y operativas



Formaciones IMH para públicos específicos

Las formaciones, los seminarios y los talleres están diseñados para tratar una variedad de temas de salud mental infantil y de la primera infancia específicos para cada público. Todas las formaciones que se ofrecen a través de CT- AIMH están relacionadas con los requisitos de competencia que, una vez cumplidos, conducen a la obtención de la acreditación en Culturally Competent, Relationship-Focused Practice Promoting Infant Mental Health® (Práctica culturalmente competente y centrada en las relaciones que promueve la salud mental infantil). El proceso paralelo se tiene en cuenta a la hora de diseñar todas las formaciones y, siempre que es posible, se sirve comida y la atención a las necesidades de los participantes es una prioridad para crear un entorno centrado en la creación de relaciones. Para promover el acceso, se han incluido cuotas de aval y afiliación en los contratos de las series de formación para cubrir dichos costes. Es posible que se ofrezcan grupos de supervisión/consulta reflexiva junto con algunas series de formación.





CONNECTICUT ASSOCIATION FOR Infant Mental Health

Promoting, supporting and strengthening children's earliest relationships,
prenatal to age six

www.ct-aimh.org

Formaciones en IMH para públicos específicos

Cursos de formación para visitantes a domicilio

Serie de 6 días centrada en los aspectos únicos de las visitas domiciliarias y la promoción de la relación de apego entre un cuidador y su bebé o

- 0 Formados en 2022, 29 Formados en 2023
- 158 Formados hasta la fecha



Serie de cursos de formación para el DCF, la OEC y los socios comunitarios

8 temas de formación centrados en el trauma, pérdida y duelo no resueltos.

- 99 Capacitados en 2022, 99 Capacitados en 2023
- 1,144 entrenados hasta la fecha

Serie de cursos para proveedores de cuidado infantil

De 4 a 6 sesiones centradas en trabajar con grupos de bebés y niños pequeños. Las sesiones se adaptan a cada comunidad y suelen incluir sesiones nocturnas adicionales para los proveedores de cuidado infantil familiar. Serie ofrecida en español. Se ofrece virtualmente.

- Serie en inglés: 23 formadas en 2022, 0 en 2023
- Serie en español: 25 Formadas en 2022, 38 en 2023
- 416 formadas hasta la fecha



Serie para pediatras

Presentación de 45 minutos durante la hora del almuerzo (se proporciona el almuerzo) centrada en la salud mental infantil y desarrollada en colaboración con el Child Health Development Institute (CHDI por sus siglas en inglés), a la que ahora se puede acceder a través del CT Children's Medical Center (CCMC por sus siglas en inglés).

- 0 Formadas en 2022-2023
- 14 oficinas Formadas hasta la fecha



CONNECTICUT ASSOCIATION FOR Infant Mental Health

Promoting, supporting and strengthening children's earliest relationships,
prenatal to age six

www.ct-aimh.org

Audience-Specific IMH Trainings

Reflective Supervision/Consultation (RS/C) Training Series for Supervisors

Began as a 5-day training series, with both in-state and out-of-state presenters. It also had a 2-day follow-up and ½ day follow-up. There was a focus on embedding the newly developed RIOS. The series was then trimmed to five(5) 3-hour modules.

- 23 Trained in 2022, 21 Trained in 2023
- 70 trained YTD

Higher Education Faculty

2-day symposium titled: The Faculty Symposium on Embedding Infant and Early Childhood Mental Health Principles into Curricula created in Minn. 3 presenters from Minn. presented 4 topics of the 10 created with 2 in-state keynote presenters that spoke to 2 of the 4 topics.

- 0 trained in 2022-2023
- 24 trained YTD



Clinical Mental Health Practitioners

18 month training on Trauma-Informed Child Parent Psychotherapy (CPP) entailed 7 or 8 in-person full days, and 18 months of consultation calls (2 calls/1 hour each/month).

- 0 trained in 2022-2023
- 29 trained YTD

DC:0-5, Clinical Training

CT-AIMH trained 2 DC:0-5 Train the Trainers (TOT) in 2023, will begin offering training in 2024.



CONNECTICUT ASSOCIATION FOR Infant Mental Health

Promoting, supporting and strengthening children's earliest relationships,
prenatal to age six

www.ct-aimh.org

Conferences

Two conferences are held each year, one in the Spring and one in the Fall. Conferences are designed for all professionals and disciplines working with infants, young children 0–6 and their families.

In 2022 conferences were held virtually and totaled 340 attendees. In 2023 conferences were held in-person and totaled 374 attendees. To date, CT-AIMH provided training to 3,753 attendees across Connecticut.



2022 Virtual Conferences

Spring 2022

Topic: Honoring Diversity, Identity, and Race through Infant Mental Health and Reflective Supervision

Current events such as the pandemic, racial violence, and exposed systemic racism and disparities, test us personally and professionally. Examining Infant Mental Health (IMH) and Reflective Supervision (RS) through a lens that honors diversity, identity, and race is crucial to best practice.

Presenters: Karol Wilson, LMSW, IMH-E® and Deborah J. Weatherston, PhD, IMH-E®

Date: May 12, 2022, 9am–3pm



Fall 2022

Topic: Bridging to Belonging: Understanding Power and Creating Connections, with a special focus on Diversity-Informed Tenets for Work with Infants, Children, and Families (tenet #3)

Keynote Speaker: John A. Powell, Director of the Othering and Belonging Institute
Moderator: Carlita Elias, PsyD, IMH-E®

Panel Presenters: Rebecca Cuevas, MSW, LMSW, Ava M. Hart, LCSW, IMH-E®, Julie Hall, BSc, PT, & Tanika Eaves, PhD, LCSW, IMH-E®

Date: November 16, 2022, 9am – 4pm



2023 In-Person Conferences

Spring 2023



Topic: SURVIVAL TO SECURITY:
Addressing the Stressors of the
COVID-19 Pandemic: Keeping the
Baby in Mind during the prenatal
and early parenting stages

Keynote Presenters:
Massiel Abramson, LMFT, MS
Jennifer Vendetti, LMSW, CEIM, PMH-
C

Date: May 12, 2023, 8:30am-12:30pm



Fall 2023



Topic: Diversity Informed Tenet #4-
Recognize and Respect Non-
Dominant Bodies of Knowledge

Keynote Speaker: Dr. Barbara Stroud

Panelists:
Anamaria Orozco, LCSW
Hector Chaidez Ruacho, LCSW
Susan Smith, ANFT
Becca Atkins, LPC

Date: Nov. 16, 2023, 8:30am-3:30pm



CONNECTICUT ASSOCIATION FOR Infant Mental Health

Promoting, supporting and strengthening children's earliest relationships,
prenatal to age six

www.ct-aimh.org

Advisory Committees



Diversity, Equity and Inclusion Advisory Committee

This Committee started in 2020 and has created the initial goal of working to combat discrimination and promote diversity, equity, and inclusion leadership opportunities for CT-AIMH members and the infant and early childhood community.



2022-2023 Developments

- Developed a Committee Charter in June 2022. This Charter served as a model for the development of other advisory committee charters.
- Members engaged in a multidimensional, self-identity, reflection and developed a summer reading resource list.
- Began the task of understanding the diversity within the Association membership, endorsed professionals, and training participants.
- Identified that streamlining the collection and reporting of this information as an important priority for the Association moving forward in order to address the need to identify disparities and help the association achieve the goal of building a more diverse workforce.



CONNECTICUT ASSOCIATION FOR Infant Mental Health

Promoting, supporting and strengthening children's earliest relationships,
prenatal to age six

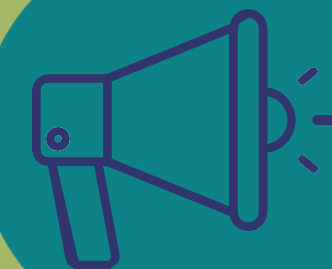
www.ct-aimh.org

Advisory Committees

IECMH-E®
IMH-E®

Endorsement Advisory Committee

This Committee is composed of the initial people to become endorsed in Culturally Sensitive, Relationship-Focused Practice Promoting Infant Mental Health®. The Endorsement Team plans for the advising and reviewing of portfolios and exams that may lead to Endorsement. Supported pathway for Emeritus status for Endorsees



2022-2023 Developments

This is an ad hoc committee that meets as needed. Discussed the development of Emeritus Status for those no longer working in the IECMH field. They would not need to renew Endorsement, only need to maintain CT-AIMH membership.

Advisory Committees



Policy and Advocacy Advisory Committee

This Committee works to identify, monitor and respond to policy and health issues related to the mental health needs of, young children and their families. Establishes relationships with community partners, which may include the Connecticut Chapter of the American Academy of Pediatrics, State Legislators, Child Advocate, and other State Leaders. Monitors and advocates for ongoing funding for services for infants, young children and their families, and promote strong policies for infants, children and their families.



2022-2023 Developments

- Integrated Care Pilot contract signed and started
- Participation in the Zero To Three Infant and Early Childhood Mental Health Financing Policy Project
- CT AIMH has joined with the CT AAP in providing testimony to the Connecticut State Legislature in opposition to a proposal to alter standards of childcare.
- Support for the Sparkler app, a novel method of providing universal developmental and social-emotional screening in infancy and early childhood.
- Developed Committee Charter



CONNECTICUT ASSOCIATION FOR Infant Mental Health

Promoting, supporting and strengthening children's earliest relationships,
prenatal to age six

www.ct-aimh.org

Advisory Committees

Professional Development Advisory Committee

This Committee actively co-creates, supports, and promotes professional development and education opportunities that align with current best practices in Infant and Early Childhood Mental Health.



2022-2023 Developments



- Developed the committee charter
- Delivered 8 topic IMH training series virtually
- Delivered childcare training series in English and in Spanish
- Revised and delivered RS/C training series in person and virtually
- Collaborated with United Way in Danbury to support training and Endorsement for 20 Spanish Speaking providers
- Supported offering RSC to Spanish speaking providers
- Planned 4 CT-AIMH conferences with 2 focused on the Diversity Informed Tenets



CONNECTICUT ASSOCIATION FOR Infant Mental Health

Promoting, supporting and strengthening children's earliest relationships,
prenatal to age six

www.ct-aimh.org

Advisory Committees



Promotion and Education Advisory Committee

This Committee promotes and educates the greater community on the importance of infant mental health and the work of CT-AIMH. Develop educational and promotional materials that will reach members and the greater community. Develop membership communication strategies to support engagement. Respond to opportunities to represent and promote CT-AIMH.



2022-2023 Developments

- Completed Committee Charter
- Created and Reviewed Celebrate Babies survey
- Celebrate Babies Campaign
- Governor's Proclamation
- Produced Celebrate Babies Video
- Celebrate Babies Events 2022 and 2023
- Volunteered at Spring and Fall Conferences



SPOTLIGHT: CT-AIMH Received Official Proclamations for Celebrate Babies Week in Connecticut

In 2022 and in 2023 an official statement was signed by Governor Lamont proclaiming that one week each year during the month of October is dedicated to celebrate infants, toddlers, young children, their families and early childhood professionals.



By His Excellency Ned Lamont, Governor: an
Official Statement

WHEREAS, approximately 35,000 babies are born every year in Connecticut; and

WHEREAS, early relationships are the foundation for a young child's psychological, emotional, developmental, and physical wellbeing; infants, toddlers, and young children require nurturing and protection from one or more consistent caregivers; and

WHEREAS, Connecticut is dedicated to collaboratively increase public awareness understanding of the importance of healthy relationships and social and emotional development in the early years; and

WHEREAS, data shows the need to address disparities and ensure equitable access to services and programs that support infants, toddlers, young children, and their families; and

WHEREAS, the state is committed to improving opportunities and outcomes for infants, toddlers, young children, and their families through collaboration and partnerships; and

WHEREAS, one week each year is dedicated to officially celebrate infants, toddlers, young children, their families, and early childhood professionals; and

WHEREAS, through public awareness campaigns, intentional community outreach, networking, and social action, babies, their families, and those that support them are celebrated; now

THEREFORE, I, Ned Lamont, Governor of the State of Connecticut, do hereby officially proclaim the week of October 17th – 21st, 2022, to be

CELEBRATE BABIES WEEK

in the State of Connecticut.



Ned Lamont

GOVERNOR



SPOTLIGHT: 2023-2025 Integrated Care Pilot

The Connecticut Association for Infant Mental Health was awarded a \$1.8 million dollar contract from the Department of Social Services for an Integrated Care Pilot Project, spanning 2023 through 2025. The pilot will ensure that children 0–3 served by the pilot project will be monitored, screened, and assessed for developmental and social emotional health needs. If indicated, they will be referred for services in their community by an integrated team of professionals including the child's Pediatrician, a Family Resource Center Family Educator, and a Mid-level Developmental Practitioner.

The project will focus upon three Pediatric sites, where their community's Family Resource Center's Family Educator will be co-located, and perform appropriate screenings, refer for further assessment or services if needed, follow-up to ensure continuity of care, and monitor the child and family's progress through December 2025. The project will provide pilot families access mid-level developmental assessments in a timely manner, by contracting directly with IMH-Endorsed practitioners.

The pilot's additional goal is to increase the number of IMH-Endorsed professionals who are qualified to provide services for children from birth to 5 years old and their caregivers. The pilot offers 80 Clinical Professionals a free pathway to Endorsement, in 2024 and 2025, including Reflective Supervision/Consultation, Membership, and Infant Mental Health Training Series.



FAMILY COMPLETES
SPARKLER APP SCREENINGS

SCREENING

DEVELOPMENTAL &
SOCIAL/EMOTIONAL SCREENINGS,
SOCIAL DETERMINANTS OF HEALTH,
MCHAT, MAT. DEPRESSION

CONSULTATION

FRC FAMILY EDUCATOR
DISCUSSES SCREENING RESULTS
WITH PEDIATRICIAN AND FAMILY

PEDIATRICIAN

REFERRAL

PROMOTION
PREVENTION
INTERVENTION
(DIAGNOSIS /TREATMENT)

ASSESSMENT

MID-LEVEL DEVELOPMENTAL
ASSESSMENT (MLDA) ,
BIRTH TO THREE

CONSULTATION

ASSESSMENT PROVIDER
DISCUSSES ASSESSMENT
RESULTS WITH PEDIATRICIAN
AND FAMILY



CONNECTICUT ASSOCIATION FOR
Infant Mental Health

Promoting, supporting and strengthening children's
earliest relationships, prenatal to age six

www.ct-aimh.org

INTEGRATED CARE PILOT

2023-2025

THE PURPOSE OF THE PILOT IS TO
ENSURE CHILDREN AGES 0-5 ARE
MONITORED, SCREENED, ASSESSED,
AND REFERRED FOR APPROPRIATE
DEVELOPMENTAL AND MENTAL HEALTH
SERVICES IN THEIR COMMUNITIES BY
AN INTEGRATED TEAM OF OF INFANT
MENTAL HEALTH-TRAINED
PROFESSIONALS BEGINNING IN YEAR
ONE WITH CHILDREN 0-3 YEARS OLD.

SPOTLIGHT: Celebrating Spanish Speaking ECE Professionals



Delivered 10-Topic IMH Childcare series in Spanish
Trained 3 bilingual presenters
Trained 4 Spanish speaking facilitators
Purchased the Spanish version of Endorsement
Hired a bilingual Endorsement Assistant
Held office hours about the Endorsement, in Spanish
Reflective Supervision offered to ECE professionals, in Spanish
27 ECE providers became Endorsed using the Spanish Version of EASy
Partnered with United Way of Western CT and the OEC

Presenters:

Karen Martinez

Jolie A. Garfinkel, BA, MA, IMH-E®

Virgen Marina Rodriguez, IMH-E®



GRACIAS

Facilitators:

Maria Amado

Gleny Adames, IMH-E®

Rosa Bodden, ECMH-E®

Ruth Rubledo, IMH-E®

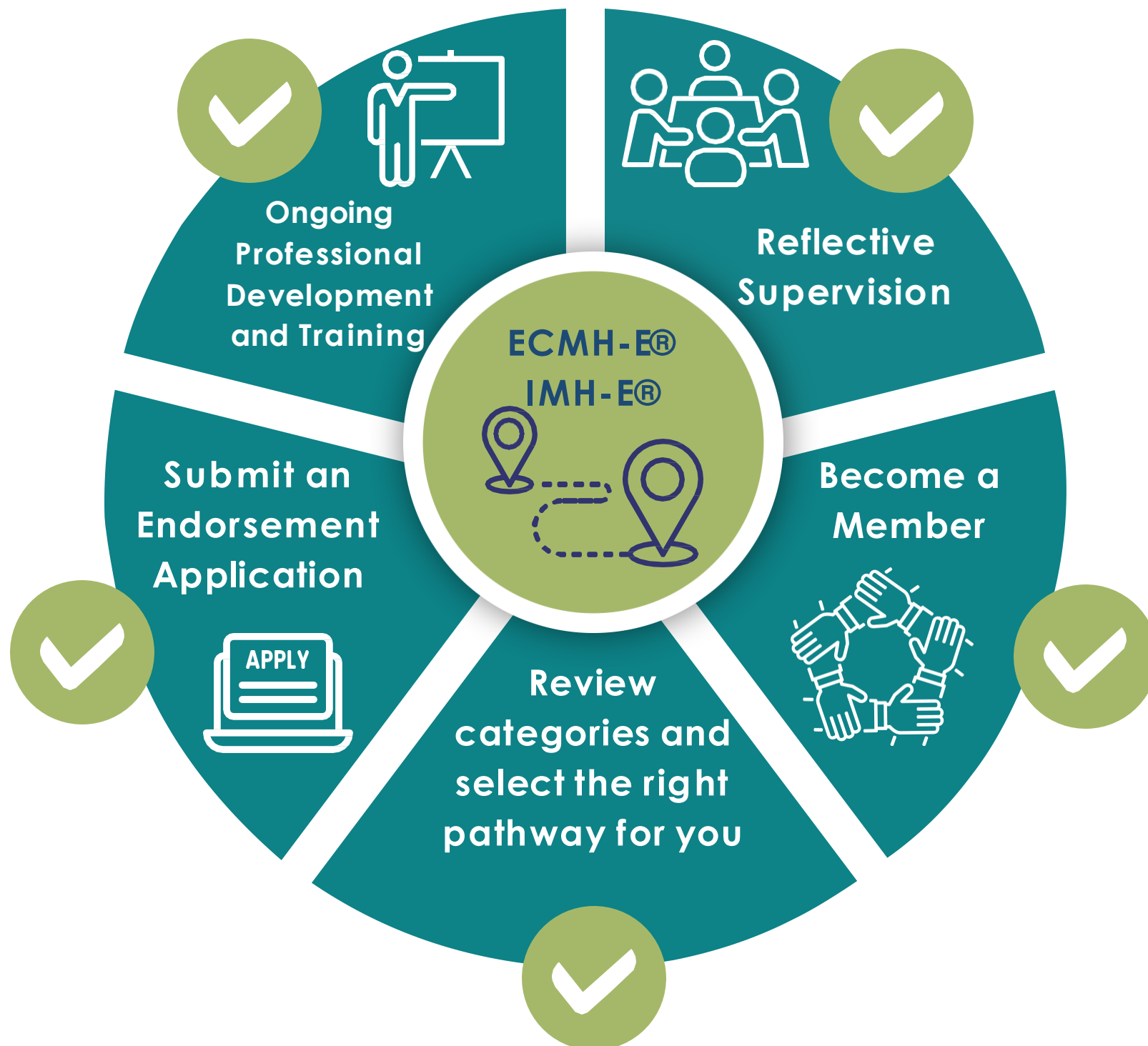


CONNECTICUT ASSOCIATION FOR Infant Mental Health

Promoting, supporting and strengthening children's earliest relationships,
prenatal to age six

www.ct-aimh.org

Infant and Early Childhood Mental Health Endorsement® (IECMH-E®)



Endorsement for Culturally Sensitive, Relationship-Focused Practice Promoting Infant and Early Childhood Mental Health® is an internationally recognized credential used to demonstrate specialization in the infant-early childhood mental health (IECMH) field. The Endorsement credential is intended for everyone who applies IECMH principles in their work across the full continuum of promotion, prevention/early intervention, clinical intervention/treatment, and macro scopes of practice. Those who earn Endorsement® have demonstrated completion of specialized education, work, in-service training, and reflective supervision/consultation (RS/C) experiences that lead to competency in the promotion and/or practice of infant and early childhood mental health (IECMH).

2022-2023 Endorsement® News:

- As of December 2023 there were over 150 endorsees
- 138 IMH endorsees and 18 ECMH endorsees!
- 27 Endorsees used the Spanish version of EASy
- New Reflective Supervision Category added to Endorsement.

Membership Benefits

Infants and young children and their caregivers deserve support and services that encourage nurturing relationships. By joining CT-AIMH- together we can move forward in creating an infant/early childhood mental health system in Connecticut.

Reduced conference fees and early registration opportunities



Current updates and news from CT AIMH, the Alliance for the Advancement of Infant Mental Health, and the World Association for Infant Mental Health



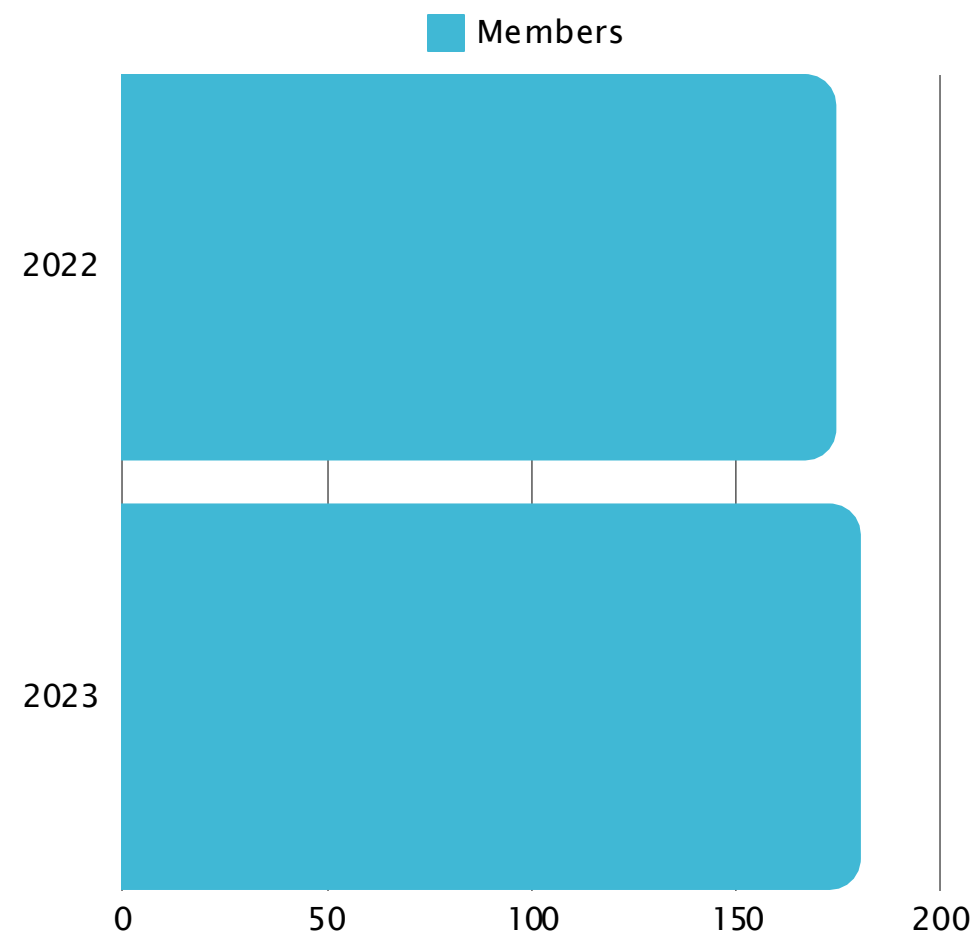
Connection to an interdisciplinary network of IECMH professionals



CT-AIMH Membership

Infants and young children and their caregivers deserve support and services that encourage nurturing relationships. By joining CT-AIMH together we can move forward in creating an infant/early childhood mental health system in Connecticut.

2022: 175 current members
2023: 181 current members





CONNECTICUT ASSOCIATION FOR
Infant Mental Health

Promoting, supporting and strengthening children's earliest relationships,
prenatal to age six

www.ct-aimh.org

Reflective Supervision/Consultation

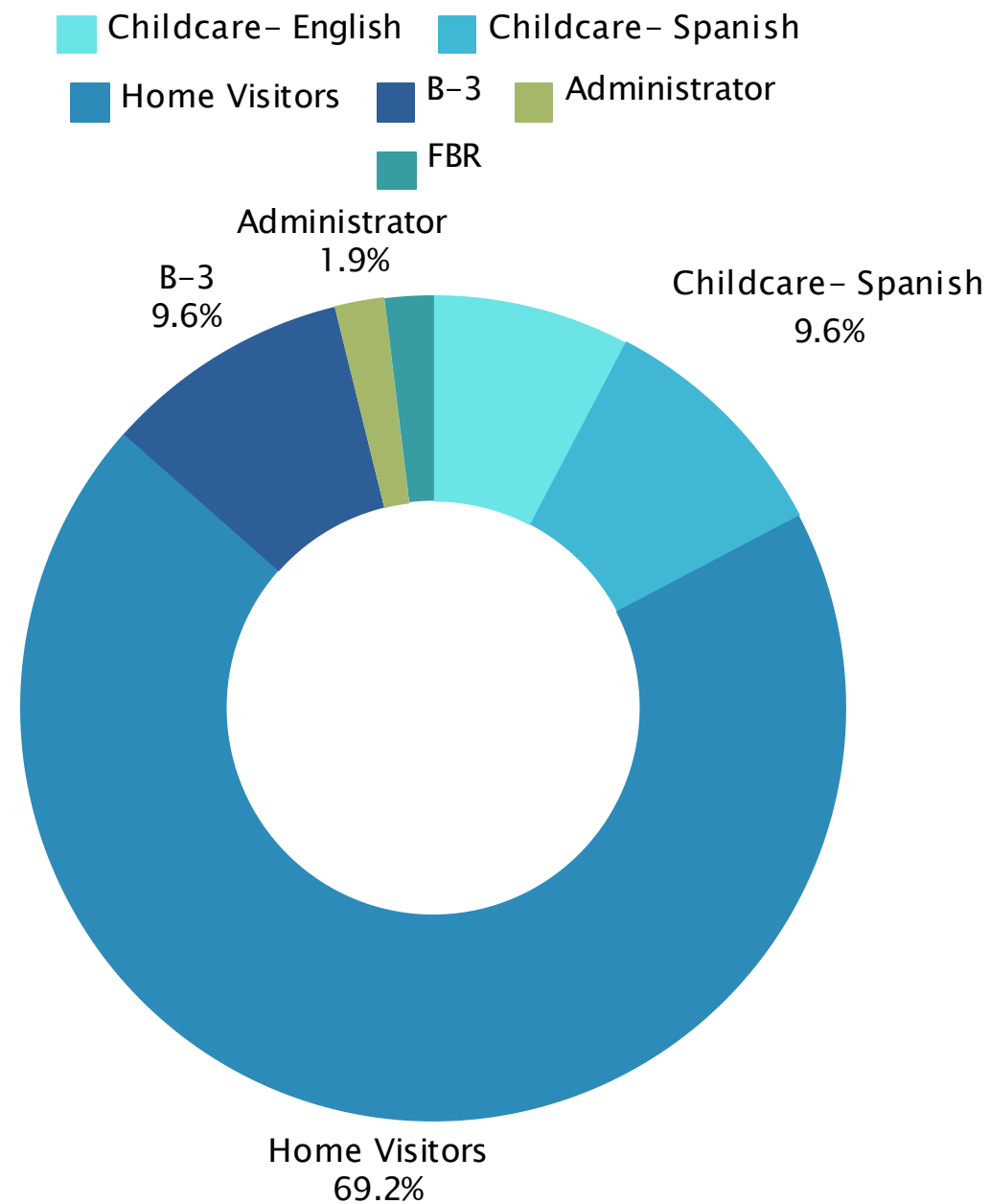
Within the RS/C process, practitioners are able to examine with a trusting supervisor/consultant the thoughts, feelings, and reactions evoked in the course of working closely with pregnant women, infants, young children, and their families. Over time and with a reliable reflective supervisor/consultant, the experience of RS/C offers practitioners the opportunity to engage in a safe, reliable, and consistent learning relationship. Through this relationship, strengths are supported, and vulnerabilities are partnered (Fenichel, 1992; Shamoon-Shanok, 2009).

A hallmark of RS/C is the shared exploration of the parallel process. In other words, in RS/C, attention is given to all relationships, including that between supervisor and practitioner, between practitioner and parent, and between parent, and infant/young child. It is critical to understand how each of these relationships affects the others.

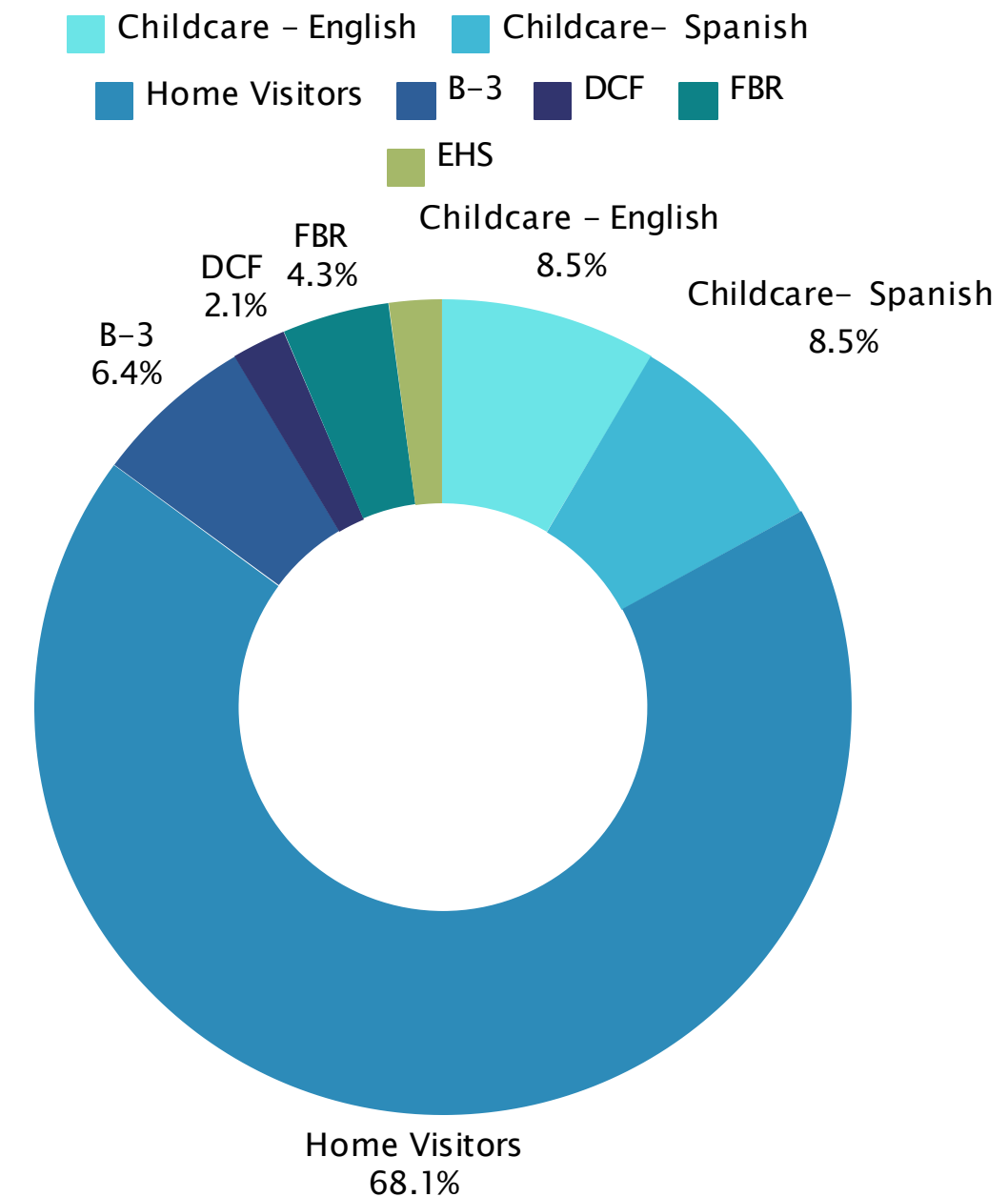
CT-AIMH values Reflective Supervision/Consultation (RS/C) and promotes inclusion of RS/C within each grant. RS/C is currently being offered to staff across many agencies & disciplines, including: Office of Early Childhood (Birth23, Home Visitors, ECE professionals) Department of Children Families, Family Based Recovery, Higher Education Faculty, and more.



RS/C Group Composition - Total Annually



2022- Nine groups were held with a total of 52 participants



2023- Nine groups were held with a total of 47 participants

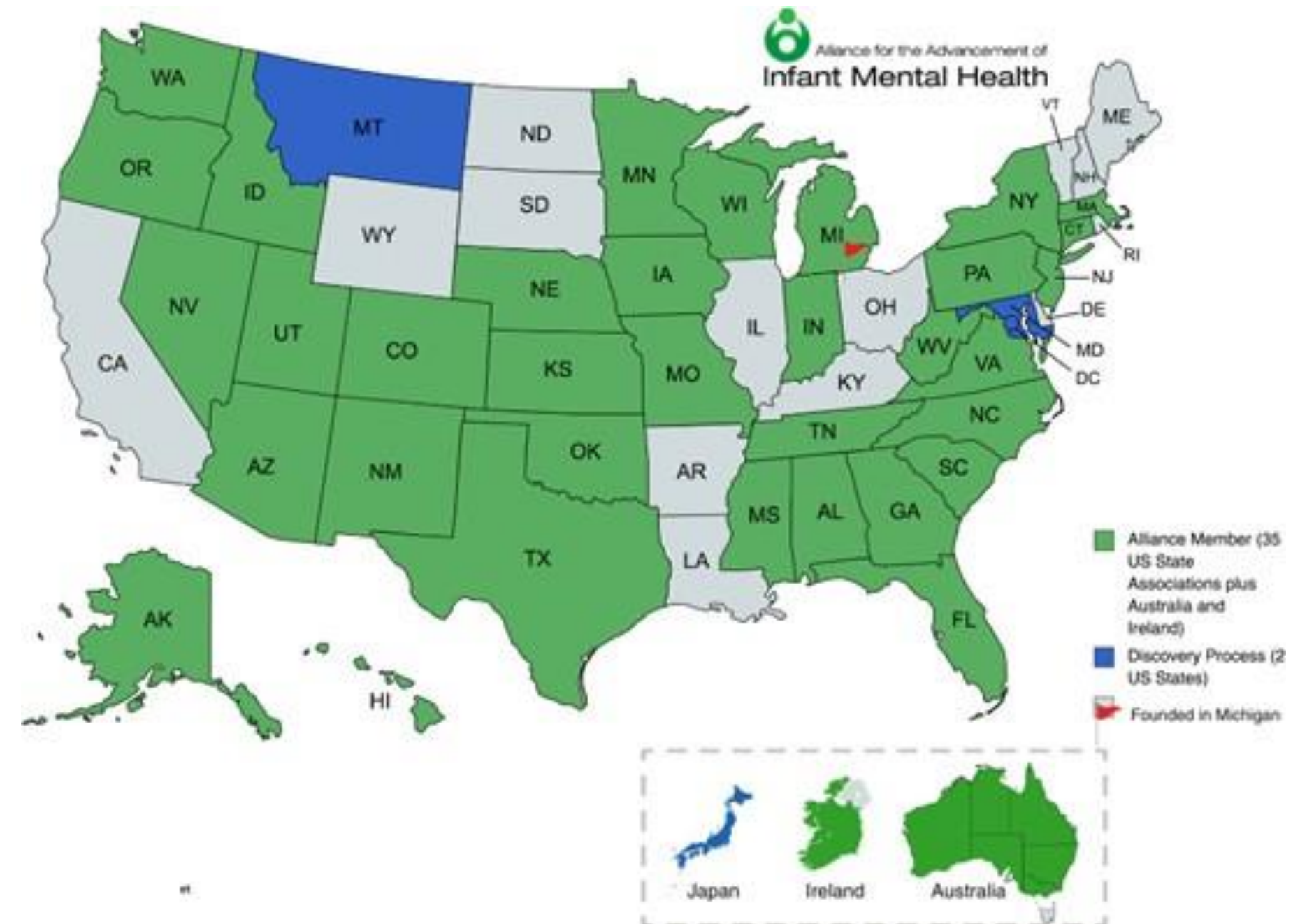


Alliance for the Advancement of Infant Mental Health

The Alliance for the Advancement of Infant Mental Health® is the global organization that includes infant mental health associations who offer the credential: Endorsement for Culturally Sensitive, Relationship-Focused Practice Promoting Infant and Early Childhood Mental Health®.

CT-AIMH has been a member of the Alliance since its inception in 2016. CT was a part of the prior group, the “League of States,” starting in 2009.

As of April 2023, there are 35 associations for infant mental health and two international associations who have licensed the use of the Competency Guidelines (MI-AIMH Copyright © 2017) and/or the Endorsement for Culturally Sensitive, Relationship-Focused Practice Promoting Infant & Early Childhood Mental Health®. Each association is a member of the Alliance for the Advancement of Infant Mental Health.





WORLD ASSOCIATION FOR
INFANT MENTAL HEALTH

The World Association for Infant Mental Health (WAIMH) is a non-profit organization that works with infants and their families to promote their mental well-being and healthy development. WAIMH's goals include:

- Considering cultural, regional, and environmental differences
- Generating and sharing scientific knowledge
- Sharing scientific knowledge about services for preventing, intervening, and caring for mental disorders in infants
- Sharing evidence-based knowledge about supporting the developmental transition to parenthood

WAIMH achieves its goals through: International and interdisciplinary cooperation, Publications, Affiliate associations, and Regional and biennial congresses.

The 18th WAIMH World Congress was held in Dublin in Ireland, July 15–19, 2023. The conference theme: Early Relationships Matter: Advancing Practice, Policy and Research in Infant Mental Health. The World Association welcomes infant mental health colleagues across the world to share the latest scientific research, clinical experiences, scientific knowledge and cultural perspectives on a global scale.

The 19th WAIMH took place in Tampere, Finland on June 5–7, 2024. The theme of the Congress, 'Looking for the Best Care for Babies, Young Children and Their Families’.

Condición financiera

Ingresos 2022: \$332,856

OEC (B-3, HV, and ECE) 70%

DCF 17%

United Way of Western CT 1%

EASTCONN .1%

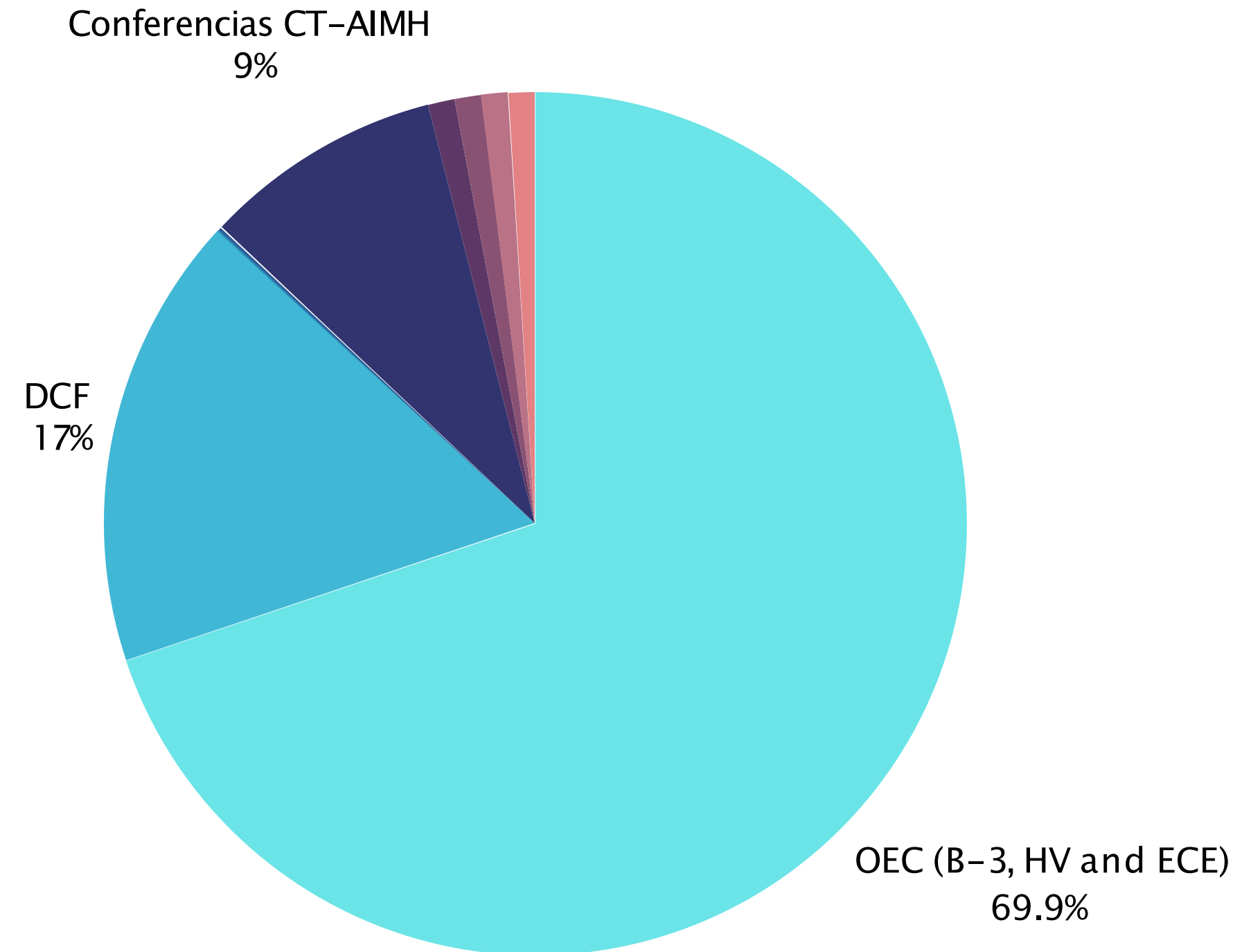
Chelsea Groton Foundation .1%

Conferencias CT-AIMH 8.8%

Donaciones 1%

Avales 1%

Membresía 1%

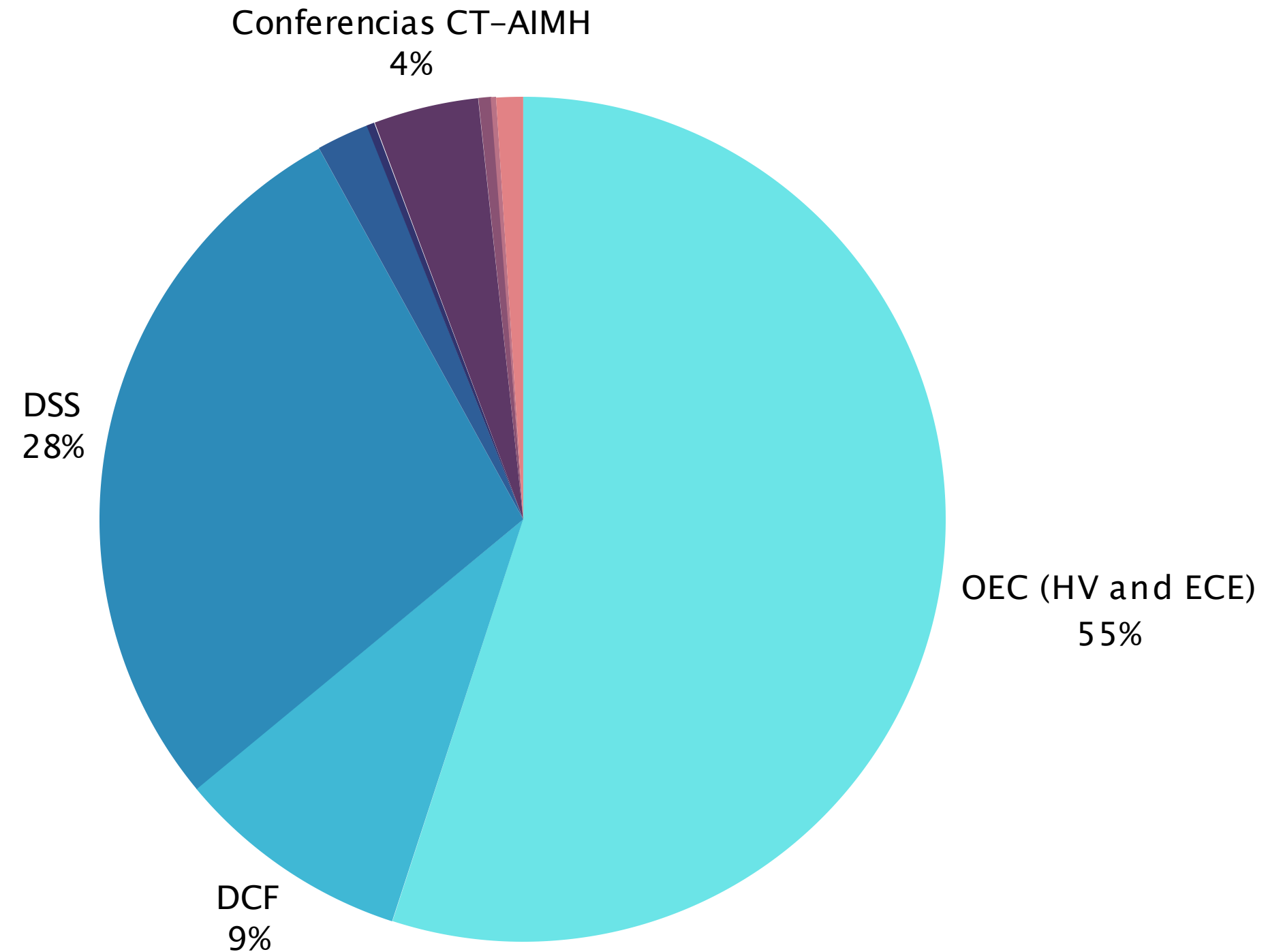


Condición financiera

Ingresos 2023: \$573,015*

- OEC (HV and ECE) 55%
- DCF 9%
- DSS 28%
- CHDI 2%
- YMCA .3%
- Conferencias CT-AIMH 4%
- Donaciones .5%
- Avales .2%
- Membresía 1%

*Auditoría no finalizada en el momento de la publicación



Próximos pasos:

La Asociación para la Salud Mental Infantil de CT ha desarrollado un plan estratégico que guiará a la Asociación en su crecimiento, defensa, desarrollo de la fuerza laboral y actividades promocionales durante los próximos años. Objetivos para 2022–2023:

Objetivo 1: Compartir conocimientos y promover la concientización sobre temas relacionados con la salud mental de bebés y niños pequeños .

Las actividades de promoción aumentarán la conciencia y el apoyo a la salud mental de bebés y niños pequeños en Connecticut. CT-AIMH actuará como convocante, para liderar y guiar las discusiones de múltiples partes interesadas en torno a las opciones de políticas, prácticas y programas que promuevan la salud mental infantil y de la primera infancia.

Objetivo 2: Aumentar la capacidad y competencia de la fuerza laboral de la primera infancia para satisfacer las necesidades sociales y emocionales de los bebés, los niños pequeños y sus familias.

Una fuerza laboral competente es esencial para promover la salud emocional, y prevenir la aparición de problemas e intervenir con los bebés y los niños pequeños y sus familias que se enfrentan a desafíos sociales y emocionales. CT-AIMH proporcionará series de formación que incluyan competencias en salud mental infantil y de la primera infancia, fomentará el aval y promoverá el uso de prácticas basadas en las relaciones* a través de las comunidades infantiles y de la primera infancia. Todos los niños deben someterse a exámenes periódicos de bienestar socioemocional y riesgo psicosocial, pero especialmente aquellas familias con mayor riesgo de resultados deficientes en el desarrollo, incluidas las familias que sufren depresión materna, consumo de sustancias, violencia doméstica y personas sin hogar.

Objetivo 3: Participar de manera visible y eficaz en la defensa de políticas públicas relacionadas al sistema de la salud mental infantil y su financiamiento.

CT-AIMH se compromete a sentarse en todas las mesas posibles y abogar por la integración de los conocimientos sobre salud mental infantil y de la primera infancia y la expansión de los servicios de intervención y terapéuticos en todos los sistemas de CT que atienden a bebés, niños pequeños y sus familias.

Objetivo 4: Construir prioridades organizativas y operativas para la sostenibilidad continua de CT-AIMH.

Continuar construyendo la infraestructura organizativa y la capacidad de CT-AIMH, fortalecer la base financiera de la organización, y elevar el perfil de la organización compartiendo ampliamente su misión y esperanza para todos los bebés, niños pequeños y sus familias en CT.

Junta directiva, 2022-2023

Oficiales:

Susan Vater, M.Ed.
Presidente

Carlita Elias, PsyD, IMH-E®
Vice-Presidente

Marianne Barton, PhD, IMH-E®
Secretaria

Robert Riley
Tesorero

Directores:

Gerald Calnen, MD, FAAP, IMH-E®
Tanika Eaves Simpson, PhD, IMH-E®
Doug Edwards
M. Alex Geertsma, MD, FAAP
Andrea Goetz, MSW
Margaret Holmberg, PhD, IMH-E®
Darcy Lowell, MD, IMH-E®
Jennifer Vendetti, LMSW, CEIM

Representantes de agencias estatales de

CT sin derecho a voto:

DCF: Stephanie Bozak, PsyD
DMHAS: Stephanie Zanker-Rivera, MS, LPC
DPH: Ann Gionet

Bienvenidos miembros de la junta directiva, 2023-2024:

Shaniece Conyers, M.Ed.
Claudia Liloy, LPC, IMH-E®
Heather Black MA, IMH-E®



CONNECTICUT ASSOCIATION FOR
Infant Mental Health

Promoting, supporting and strengthening children's earliest relationships,
prenatal to age six

www.ct-aimh.org

Personal Actual



Heather Black, LPCA, IMH-E®

Administradora de programas



Roxy Maderia

Asistente de capacitaciones/
Asistente administrativa

Personal contratado 2022-2023



**Heather Bontiz Moore, MS,
ATR-BC, LPC, IMH-E®**
Coordinadora de endosos



Anne Giordano, MA, IMH-E®
Coordinadora de capacitaciones

Jolie A. Garfinkel, BA, MA, IMH-E®
Asistente bilingue de endosos

Samantha Shaak
Webmaster

Karen Martinez
Asistente de capacitaciones

Linda Isakson
Personal de apoyo de Yale

Laura Poquette
Contadora

Socios 2022-2023

La Asociación de Connecticut para la Salud Mental Infantil agradece a los programas y agencias que han apoyado nuestro trabajo a través de los años. Nuestro colaborador más antiguo ha sido el Children's Fund a través del Child Health and Development Institute. Estamos muy agradecidos por la colaboración que se ha forjado con Yale Child Study Center al proporcionarnos espacio administrativo y asistencia. CT-AIMH agradece los recursos financieros y consultivos que nos han ofrecido nuestros amigos, socios y patrocinadores.



**United Way of Coastal
and Western Connecticut**



Nuestros Patrocinadores

Bouvier Insurance

Building Blocks

Casey Family Programs

Chelsea Groton Foundation

Child First

Children's Fund of CT and the Child Health and Development Institute

Connecticut Birth to Three System

Connecticut Coalition for Child Development Education

Elm City Project LAUNCH, Healthy From Day One

Hartford Foundation for Public Giving, Early Childhood Investments

Infant-Toddler Developmental Assessment Institute

Peace at Home Parenting Solutions

Postpartum Support International, Connecticut Chapter

The Connecticut Early Childhood Funder Collaborative, a project of the Connecticut Council for Philanthropy

The Connecticut Head Start State Collaboration Office

The Connecticut Women's Consortium

The Connecticut Workforce Collaborative for Behavioral Health

The State of Connecticut Department of Children and Families

The State of Connecticut Office of Early Childhood

The State of Connecticut Department of Public Health

The CT Department of Social Services Infant/Toddler Quality Improvement Initiative

The Early Childhood Mental Health Consultation Partnership

The Village for Families and Children

William Casper Graustein Memorial Fund

Yale Child Study Center



CONNECTICUT ASSOCIATION FOR
Infant Mental Health

Promoting, supporting and strengthening children's earliest relationships,
prenatal to age six

www.ct-aimh.org

Gracias

CT-AIMH
c/o Yale Child Study Center
230 S. Frontage Road,
New Haven, CT 06520

